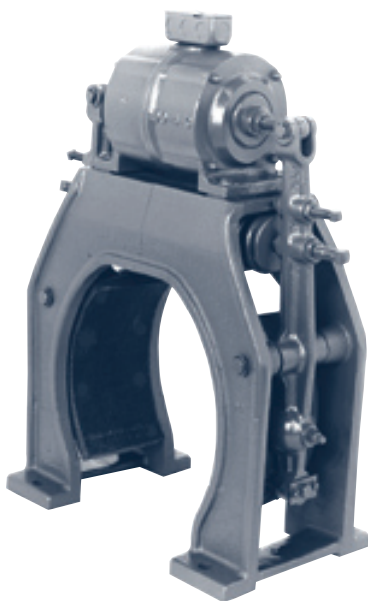


DIRECT CURRENT DRUM BRAKE



Hollister-Whitney offers Direct Current Brakes that feature a completely enclosed coil, individual spring tension adjustments, individual stroke adjustments, and pivot shoes with toe and heel adjustments. They are easy to install and adjust (*split frame*).

Operating voltage on Brake Coil is 230 Volts D.C. (115 Volts Optional). When using 230-volt coil, voltage may be decreased to 160 volts for running and holding. For 115-volt coil, voltage may be decreased to 85 volts for running and holding. D.C. Rectifier Panels, Transformer and Split Brake Drums available. Modifications available for non-standard drum diameters and widths.

Electrical Information

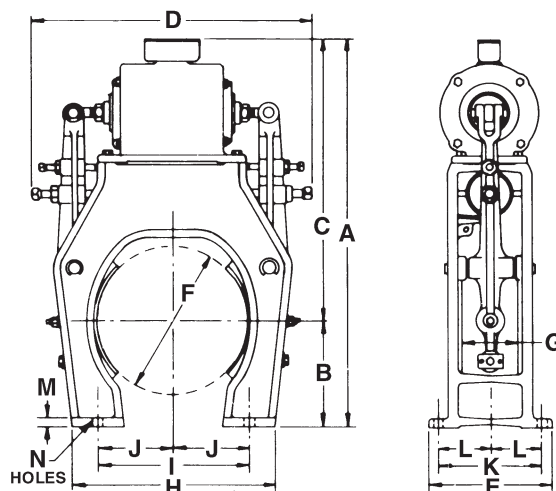
Models 80 - 111

| | Optional | Standard |
|-------|----------|----------|
| | 115V | 230V |
| Ohms | 71 | 280 |
| Amps | 1.63 | .82 |
| Watts | 187 | 189 |

Models 115 - 125-20

| | Optional | Standard |
|-------|----------|----------|
| | 115V | 230V |
| Ohms | 84 | 313 |
| Amps | 1.38 | .74 |
| Watts | 159 | 169 |

Dimensions



When Ordering Brakes, Please Specify The Following:

- Diameter and Width of Brake Drum
- Distance from the Center Line of the Brake Drum to the Top of the Bedplate
- Voltage
- Control (Single Speed, 2 Speed, V.V., or V.F.A.C.)
- Capacity and Speed
- Amount of Existing Shoe Contact on Drum

| Assy. No. | Brake | | A | B | C | D | E | F | G | H | I | J | K | L | M | N | Ship. Wgt. |
|-----------|-------|--|--------|--------|--------|--------|--------|----|-------|--------|--------|-------|-------|-------|-----|-------|------------|
| | Size | | | | | | | | | | | | | | | | |
| 80 | 8H | | 26 1/8 | 7 5/16 | 19 | 18 | 8 1/4 | 8 | 3 5/8 | 13 1/2 | 10 | 5 | 7 | 3 1/2 | 5/8 | 9/16 | 190# |
| 81 | 8L | | 24 1/2 | 5 1/2 | 19 | 18 | 8 1/4 | 8 | 3 5/8 | 14 | 10 | 5 | 7 | 3 1/2 | 5/8 | 9/16 | 190# |
| 85 | 9H | | 26 1/8 | 7 5/16 | 19 | 18 | 8 1/4 | 9 | 3 5/8 | 13 1/2 | 10 | 5 | 7 | 3 1/2 | 5/8 | 9/16 | 165# |
| 86 | 9L | | 24 1/2 | 5 1/2 | 19 | 18 | 8 1/4 | 9 | 3 5/8 | 14 | 10 | 5 | 7 | 3 1/2 | 5/8 | 9/16 | 165# |
| 90 | 10H | | 26 1/8 | 7 5/16 | 19 | 18 | 8 1/4 | 10 | 3 5/8 | 13 1/2 | 10 | 5 | 7 | 3 1/2 | 5/8 | 9/16 | 160# |
| 91 | 10L | | 24 1/2 | 5 1/2 | 19 | 18 | 8 1/4 | 10 | 3 5/8 | 14 | 10 | 5 | 7 | 3 1/2 | 5/8 | 9/16 | 160# |
| 95 | 11H | | 28 1/2 | 9 1/2 | 19 | 19 | 9 3/4 | 11 | 5 1/8 | 16 3/4 | 13 | 6 1/2 | 8 1/2 | 4 1/4 | 5/8 | 9/16 | 190# |
| 96 | 11L | | 25 1/2 | 6 1/2 | 19 | 19 | 9 3/4 | 11 | 5 1/8 | 16 7/8 | 13 | 6 1/2 | 8 1/2 | 4 1/4 | 5/8 | 9/16 | 190# |
| 100 | 12H | | 28 1/2 | 9 1/2 | 19 | 19 | 9 3/4 | 12 | 5 1/8 | 16 3/4 | 13 | 6 1/2 | 8 1/2 | 4 1/4 | 5/8 | 9/16 | 190# |
| 101 | 12L | | 25 1/2 | 6 1/2 | 19 | 19 | 9 3/4 | 12 | 5 1/8 | 16 7/8 | 13 | 6 1/2 | 8 1/2 | 4 1/4 | 5/8 | 9/16 | 190# |
| 105 | 13H | | 32 1/4 | 11 3/8 | 20 7/8 | 20 | 10 1/2 | 13 | 5 1/2 | 19 | 15 1/4 | 7 5/8 | 9 | 4 1/2 | 5/8 | 9/16 | 215# |
| 106 | 13L | | 28 1/4 | 7 1/2 | 20 7/8 | 20 | 10 1/2 | 13 | 5 1/2 | 19 1/4 | 15 1/4 | 7 5/8 | 9 | 4 1/2 | 5/8 | 9/16 | 215# |
| 110 | 14H | | 32 1/4 | 11 3/8 | 20 7/8 | 20 | 10 1/2 | 14 | 5 1/2 | 19 | 15 1/4 | 7 5/8 | 9 | 4 1/2 | 5/8 | 9/16 | 215# |
| 111 | 14L | | 28 1/4 | 7 1/2 | 20 7/8 | 20 | 10 1/2 | 14 | 5 1/2 | 19 1/4 | 15 1/4 | 7 5/8 | 9 | 4 1/2 | 5/8 | 9/16 | 215# |
| 115 | 15H | | 35 5/8 | 13 | 20 7/8 | 23 | 11 | 15 | 6 1/8 | 20 | 16 | 8 | 9 3/4 | 4 7/8 | 5/8 | 9/16 | 250# |
| 116 | 15L | | 31 5/8 | 9 | 20 5/8 | 23 | 11 | 15 | 6 1/8 | 20 3/4 | 16 | 8 | 9 3/4 | 4 7/8 | 5/8 | 9/16 | 250# |
| 120 | 16H | | 35 5/8 | 13 | 20 5/8 | 23 | 11 | 16 | 6 1/8 | 20 | 16 | 8 | 9 3/4 | 4 7/8 | 5/8 | 9/16 | 250# |
| 121 | 16L | | 31 5/8 | 9 | 20 5/8 | 23 | 11 | 16 | 6 1/8 | 20 3/4 | 16 | 8 | 9 3/4 | 4 7/8 | 5/8 | 9/16 | 250# |
| 125-18 | 18L | | 35 3/8 | 10 1/2 | 20 7/8 | 26 1/2 | 11 3/8 | 18 | 6 1/8 | 24 | 20 | 10 | 10 | 5 | 3/4 | 13/16 | 280# |
| 125-20 | 20L | | 35 3/8 | 10 1/2 | 20 7/8 | 26 1/2 | 11 3/8 | 20 | 6 1/8 | 24 | 20 | 10 | 10 | 5 | 3/4 | 13/16 | 280# |

DIRECT CURRENT DISC BRAKE



Electrical Information

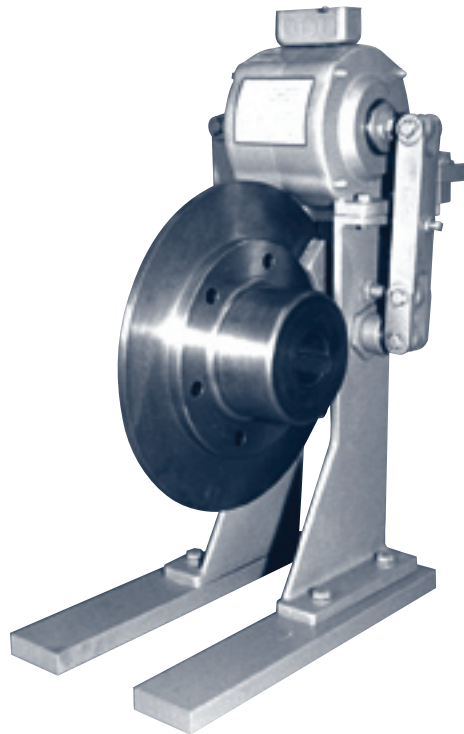
Model 92
(used on 34 machine)

| | Optional | Standard |
|-------|----------|----------|
| | 115V | 230V |
| Ohms | 33 | 138 |
| Amps | 3.48 | 1.66 |
| Watts | 400 | 382 |

Model 102
(used on 44 & 54 machines)

Model 112
(used on 64 machine)

| | Optional | Standard |
|-------|----------|----------|
| | 115V | 230V |
| Ohms | 46 | 190 |
| Amps | 2.44 | 1.24 |
| Watts | 281 | 285 |



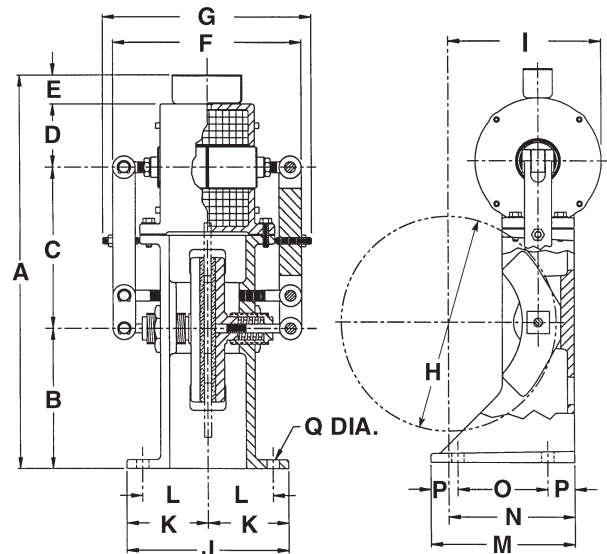
Hollister-Whitney's Direct Current Disc Brakes feature a completely enclosed coil, individual spring tension adjustments, and individual stroke adjustments. They are easy to install and adjust.

Operating voltage on Brake Coil is 230 Volts D.C. (115 Volts Optional). When using 230-volt coil, voltage may be decreased to 160 volts for running and holding. For 115-volt coil, voltage may be decreased to 85 volts for running and holding. A.C. to D.C. Rectifier Panels and Transformer available.

Dimensions

When Ordering Brakes, Please Specify The Following:

- Speed and Capacity of the Machine
- Distance from the Center Line of the Worm Shaft to the Top of the Bedplate
- Voltage & Type of Motor Control



| Brake No. | A | B | C | D | E | F | G | H | I | J | K | L | M | N | O | P | Q | Ship. Wgt. |
|-----------|--------|--------|--------|---------|-------|---------|--------|----|--------|-------|-------|-------|---|-------|-------|-------|-------|------------|
| 92 | 18 5/8 | 7 | 7 1/16 | 2 15/16 | 1 5/8 | 8 15/16 | 11 5/8 | 10 | 7 1/16 | 6 1/4 | 3 1/8 | 2 5/8 | 6 | 5 5/8 | 4 1/2 | 3/4 | 9/16 | 85# |
| 102 | 21 7/8 | 7 3/4 | 9 | 3 1/2 | 1 5/8 | 10 1/2 | 11 5/8 | 12 | 8 1/2 | 9 | 4 1/2 | 3 5/8 | 8 | 7 | 5 | 1 1/2 | 11/16 | 95# |
| 112 | 25 1/2 | 11 3/8 | 9 | 3 1/2 | 1 5/8 | 10 1/2 | 11 5/8 | 14 | 9 1/2 | 9 | 4 1/2 | 3 5/8 | 8 | 8 | 5 | 1 1/2 | 11/16 | 100# |