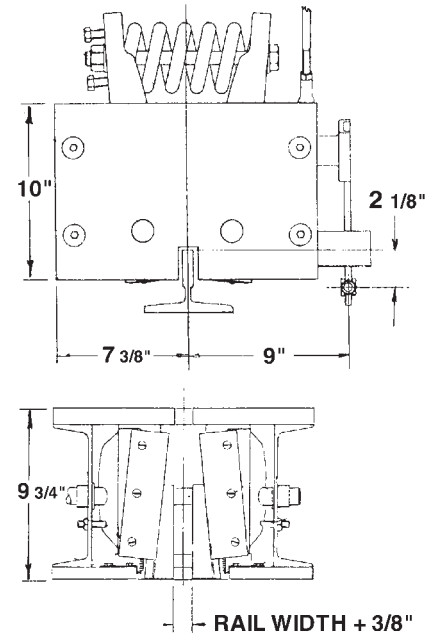
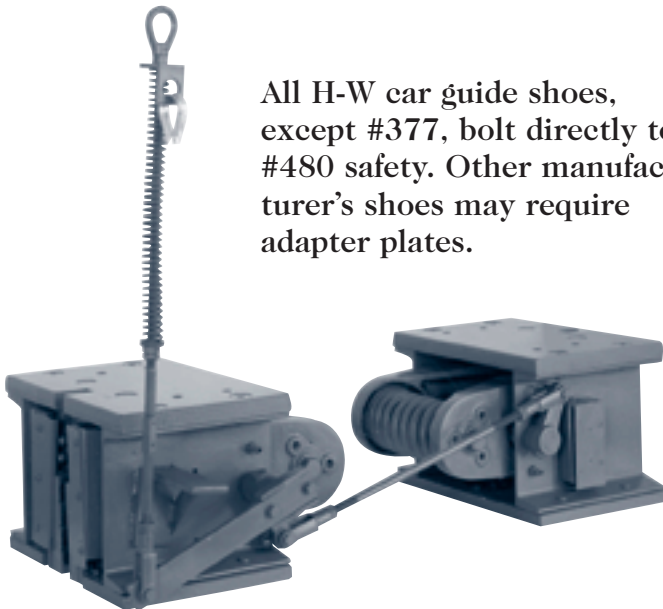


TYPE "B" FLEXIBLE GUIDE CLAMP SAFETY

The Hollister-Whitney Type "B" Flexible Guide Clamp Safety is Superior in Construction and Offers Many Important Features:

- Designed in compliance with all requirements of ASME A17.1 code
- Stopping force automatically exerted equally on both sides of each guide rail and readily adjustable through compression spring on each safety block
- Full swivel of rail grips provides full and uniform contact on all rail faces when safety is actuated
- Simple mounting under plank channels spaced for stile members of any size
- All operating linkage is adjustable and located under the car for easy installation, inspection, and maintenance from elevator pit
- Car safety switch operated by linkage under the car and automatically resets
- Arranged for mounting guide shoes of any type
- Dusttight, watertight, and explosionproof switches available at an additional charge

All H-W car guide shoes, except #377, bolt directly to #480 safety. Other manufacturer's shoes may require adapter plates.



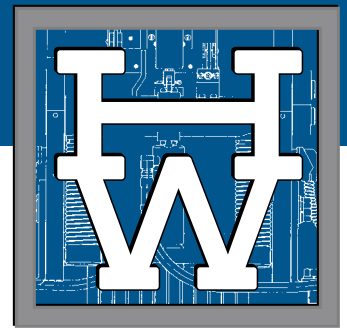
MODEL (SHIP WEIGHT 400#)	480	481	480	481
MAXIMUM LOAD (CAR + CAPACITY + COMPENSATION)	15,000 Lbs.	20,000 Lbs.	13,000 Lbs.	18,000 Lbs.
MAXIMUM CAR SPEED	500 F.P.M.	500 F.P.M.	800 F.P.M.	800 F.P.M.
MAXIMUM TRIPPING SPEED	625 F.P.M.	625 F.P.M.	970 F.P.M.	970 F.P.M.
RAIL SIZE	All except 8 Lb.	18.5, 22.5 & 30 Lb.	All except 8 Lb.	18.5, 22.5 & 30 Lb.

NOTE: ALL MODELS, INCLUDING THOSE DESIGNED TO BE USED IN HIGHER SPEED APPLICATION, MEET ASME CODE A17.1 REQUIREMENTS. IN ADDITION, MODEL #480, FOR 500 F.P.M. AND BELOW, IS APPROVED FOR V.A., G.S.A. AND STATES OF CALIFORNIA, PENNSYLVANIA, AND WISCONSIN. ALSO, MODEL #481, FOR 500 F.P.M. AND BELOW, IS APPROVED FOR STATES OF PENNSYLVANIA AND WISCONSIN.

When Ordering Safeties, Please Specify The Following:

- Car Speed • Face to Face of Guide Rails • Rail Size • Governor Location • Stile Size
- Type of Guide Shoes to be Used • Gross Load (*Empty Car Weight & Capacity*)

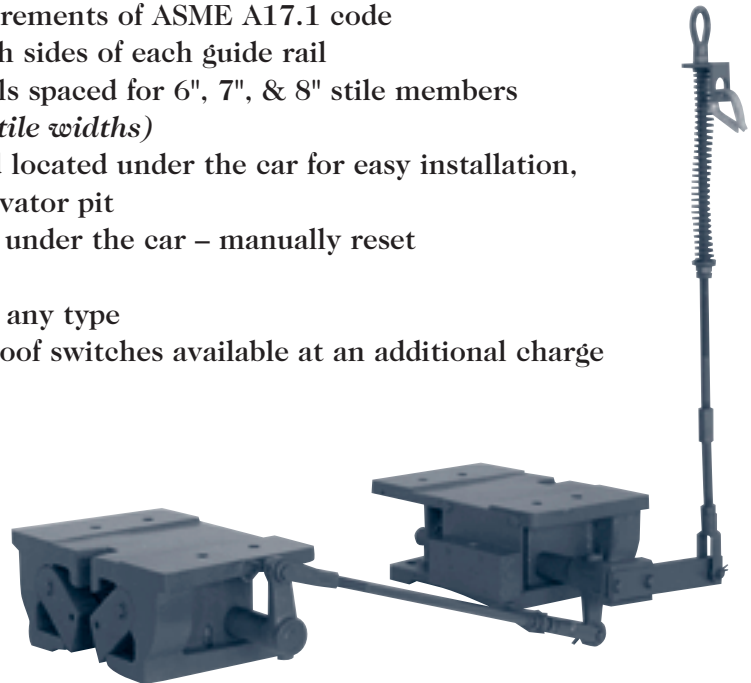
TYPE "A" INSTANTANEOUS SAFETY



Choose the Hollister-Whitney Type "A" Instantaneous Safety for these important features:

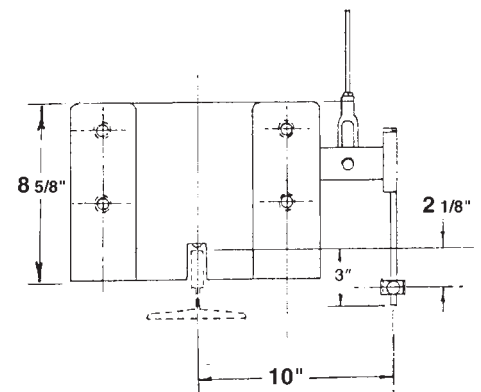
- Designed in compliance with all requirements of ASME A17.1 code
- Stopping force exerted equally on both sides of each guide rail
- Simple mounting under plank channels spaced for 6", 7", & 8" stile members (*Adapter plates available for other stile widths*)
- All operating linkage is adjustable and located under the car for easy installation, inspection, and maintenance from elevator pit
- Car safety switch operated by linkage under the car – manually reset for maximum safety
- Arranged for mounting guide shoes of any type
- Dusttight, watertight, and explosionproof switches available at an additional charge

Shoe assemblies #371 and #381 will mount to #540 safety without needing adapter plates. All other shoes require adapter plates.



MODEL (SHIP WEIGHT 175#)	540
MAXIMUM LOAD (CAR + CAPACITY + COMPENSATION)	20,000 LBS. (15,000 Lbs. IN WISC. & PA.)
MAXIMUM CAR SPEED	150 F.P.M. (100 F.P.M. IN PA.)
MAXIMUM TRIPPING SPEED	210 F.P.M.
RAIL SIZE	8,11,12,15,18.5 & 22.5 Lbs.

NOTE: THIS MODEL MEETS ASME CODE A17.1 REQUIREMENTS. IT IS NOT APPROVED IN THE STATE OF CALIFORNIA.



When Ordering Safeties, Please Specify the Following:

- Car Speed • Face to Face of Guide Rails
- Rail Size • Governor Location
- Stile Size • Type of Guide Shoes to be Used

