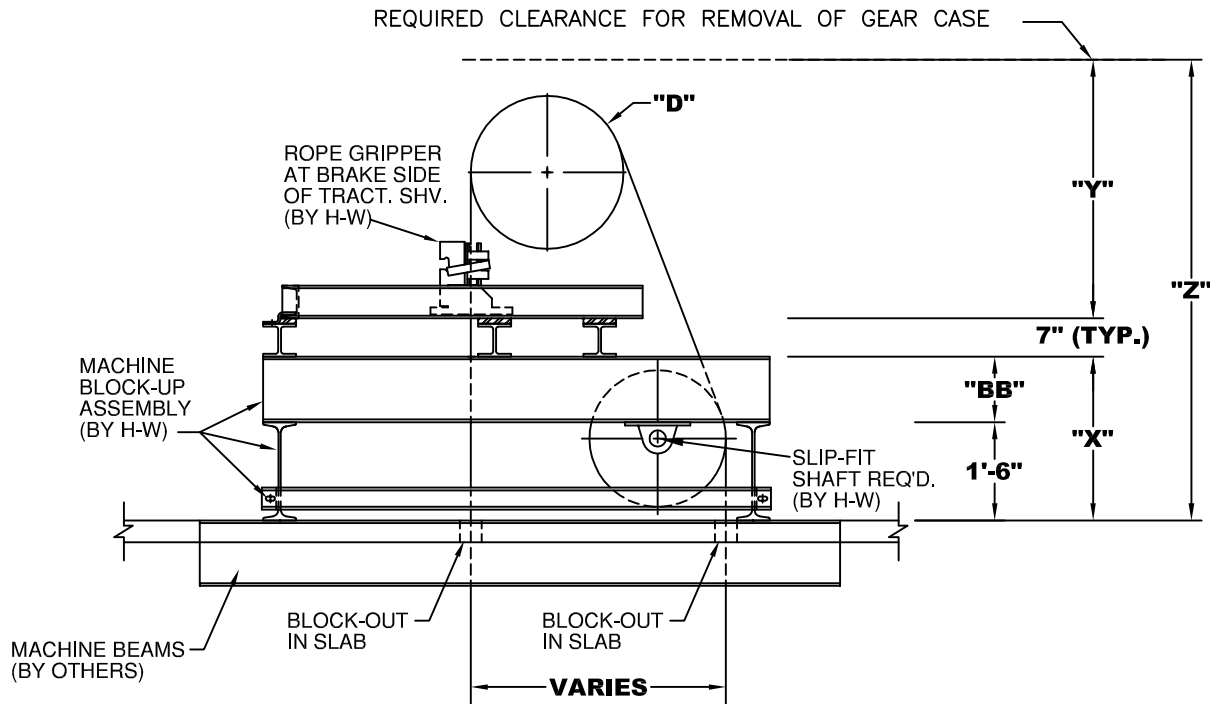


# HOLLISTER-WHITNEY ELEVATOR CORPORATION

#1 Hollister-Whitney Parkway  
 Quincy, IL 62305  
 Phone: 217-222-0466

Fax: 217-222-0493  
 email: engineering@hollisterwhitney.com  
 www.hollisterwhitney.com

## OVERHEAD GEARED MACHINE BLOCKUP ASSEMBLY WITH MACHINE MOUNTED ROPE GRIPPER



THE H-W OVERHEAD GEARED MACHINE BLOCK-UP ASSEMBLY IS AVAILABLE FOR THE COMBINATIONS LISTED BELOW						
MACHINE	ROPE GRIPPER MODEL	TRACTION SHEAVE DIA.	MINIMUM DIMENSIONS			
		"D"	"BB"	"X"	"Y"	"Z"
#34 O.H.	#620	22", 24", 25"	10"	2'-4"	3'-4 7/8"	6'-3 7/8"
#44 O.H.	#620	22", 24", 25", 26", 28"	10"	2'-4"	3'-6"	6'-5"
	#622	22", 24", 25", 26", 28"	10"	2'-4"	3'-6"	6'-5"
#54 O.H.	#620	22", 25", 26", 28", 30"	12"	2'-6"	3'-11 3/8"	7'-0 3/8"
	#622	25", 26", 28", 30"	12"	2'-6"	3'-11 3/8"	7'-0 3/8"
#64 O.H.	#622	28", 30", 32", 34", 36"	12"	2'-6"	4'-11 1/8"	8'-0 1/8"
	#624	32", 34", 36"	12"	2'-6"	4'-11 1/8"	8'-0 1/8"
	#626	32", 34", 36"	12"	2'-6"	4'-11 1/8"	8'-0 1/8"
#74 O.H.	#622	32", 34", 36", 38"	15"	2'-9"	6'-1 1/2"	9'-5 1/2"
	#624	32", 34", 36", 38"	15"	2'-9"	6'-1 1/2"	9'-5 1/2"
	#626	32", 34", 36", 38"	15"	2'-9"	6'-1 1/2"	9'-5 1/2"

**NOTE: DIMENSIONS ABOVE ARE BASED ON MINIMUMS. OVERALL HEIGHT "Z" AND BLOCKING BEAM HEIGHT "BB" ARE DEPENDENT ON JOB SPECIFIC WEIGHTS AND SUBJECT TO CHANGE.**