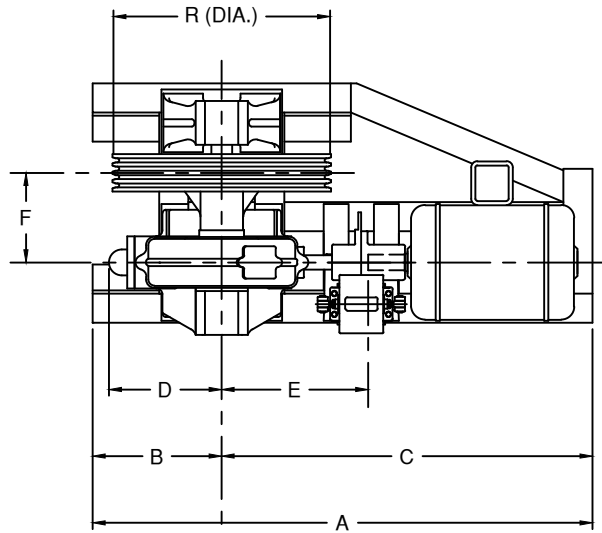
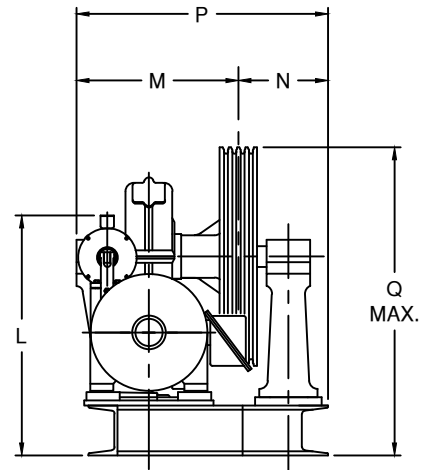
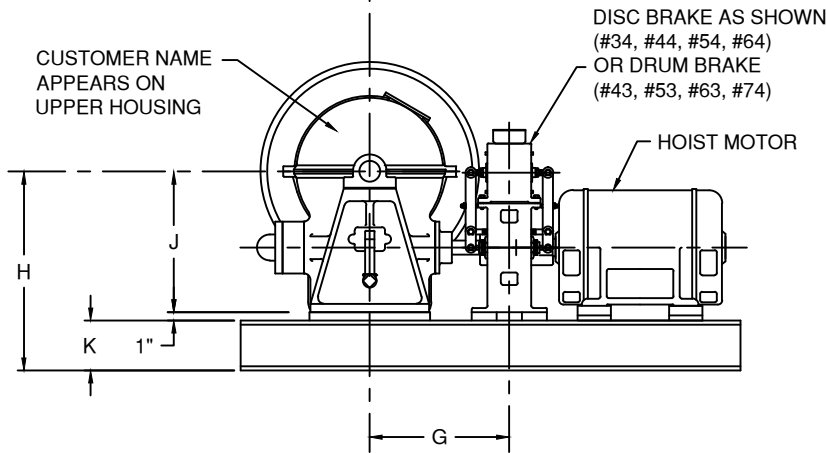


DIMENSIONS FOR OVERHEAD TRACTION MACHINES WITH STANDARD DIAGONAL BASEPLATE

| MACH. | BRAKE | A | B | C | D | E | F | G | H | J | K | L | M | N | P | Q | R (DIA.) | |
|----------|-----------|----|--------|--------|---------|----------|--------|---------|----------|----------|----|--------|--------|--------|--------|----------|----------|------|
| | | | | | | | | | | | | | | | | | MIN. | MAX. |
| #34 O.H. | #92 DISC | 48 | 11 | 37 | 10 7/8 | 13 11/16 | 8 | 12 | 21 7/8 | 14 7/8 | 6 | 25 5/8 | 15 3/8 | 8 1/4 | 23 5/8 | 34 3/8 | 20 | 25 |
| #44 O.H. | #102 DISC | 60 | 15 1/2 | 44 1/2 | 13 7/8 | 17 9/16 | 10 3/4 | 15 5/16 | 23 7/8 | 16 7/8 | 6 | 28 7/8 | 20 | 10 3/4 | 30 3/4 | 37 7/8 | 20 | 28 |
| #43 O.H. | #90 DRUM | 60 | 15 1/2 | 44 1/2 | 13 7/8 | 17 3/8 | 10 3/4 | 16 3/4 | 23 7/8 | 16 7/8 | 6 | 36 3/4 | 20 | 10 3/4 | 30 3/4 | 37 7/8 | 20 | 28 |
| #54 O.H. | #102 DISC | 66 | 17 1/2 | 48 1/2 | 14 3/4 | 17 3/4 | 12 1/2 | 15 5/8 | 26 3/4 | 19 3/4 | 6 | 30 5/8 | 23 3/4 | 15 | 38 3/4 | 41 3/4 | 20 | 30 |
| #53 O.H. | #100 DRUM | 66 | 17 1/2 | 48 1/2 | 14 3/4 | 19 9/16 | 12 1/2 | 19 | 26 3/4 | 19 3/4 | 6 | 39 | 23 3/4 | 15 | 38 3/4 | 41 3/4 | 20 | 30 |
| #64 O.H. | #112 DISC | 72 | 20 | 52 | 18 3/8 | 19 7/8 | 13 3/8 | 17 5/8 | 33 1/4 | 24 1/4 | 8 | 34 1/2 | 25 1/2 | 16 1/8 | 41 5/8 | 51 1/4 | 25 | 36 |
| #63 O.H. | #110 DRUM | 78 | 20 | 58 | 18 3/8 | 24 3/8 | 13 3/8 | 23 3/8 | 33 1/4 | 24 1/4 | 8 | 45 | 25 1/2 | 16 1/8 | 41 5/8 | 51 1/4 | 25 | 36 |
| #74 O.H. | #120 DRUM | 84 | 20 | 64 | 19 5/16 | 24 3/4 | 18 | 23 3/4 | 40 13/16 | 29 13/16 | 10 | 46 5/8 | 31 3/4 | 16 | 47 3/4 | 59 13/16 | 32 | 38 |



RIGHT HAND MACHINES SHOWN,
LEFT HAND MACHINE SYMMETRICALLY
OPPOSITE ABOUT Q_C OF TRACTION SHEAVE.



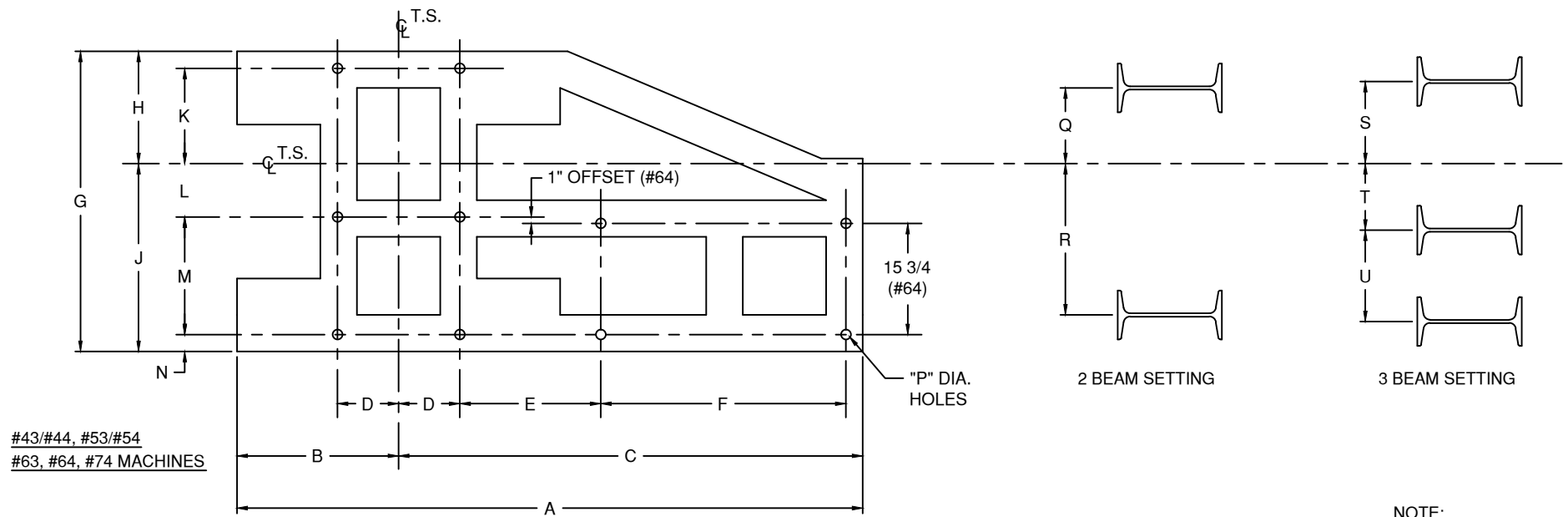
HOLLISTER-WHITNEY
ELEVATOR CORPORATION
QUINCY ILLINOIS

| | |
|---------|------------|
| PUR 641 | 04-12-2014 |
| | 03-07-2013 |
| | 04-15-2005 |
| | 11-13-2003 |

OVERHEAD TRACTION MACHINES WITH
STANDARD DIAGONAL BASEPLATE

DIMENSIONAL
SHEET

1107



#43/#44, #53/#54
#63, #64, #74 MACHINES

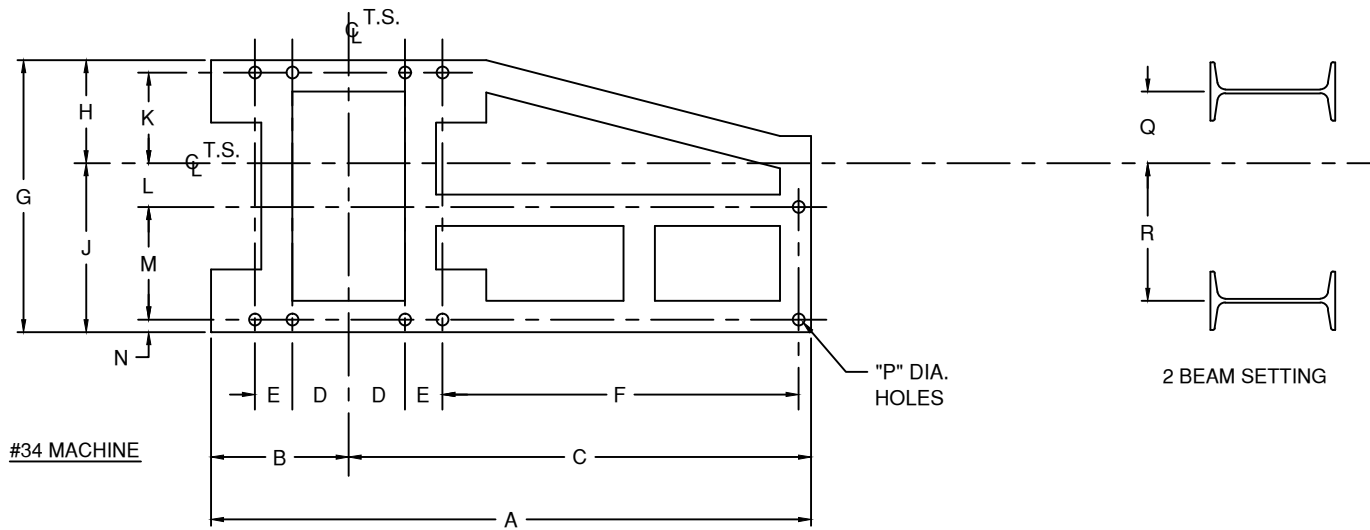
(Right hand machine shown, left hand machine is symmetrically opposite about \bar{C} of traction sheave.)

2 BEAM SETTING

3 BEAM SETTING

NOTE:

Views are showing top of baseplate. Holes are on bottom of baseplate.



#34 MACHINE

(Right hand machine shown, left hand machine is symmetrically opposite about \bar{C} of traction sheave.)

2 BEAM SETTING

DIMENSIONS FOR OVERHEAD TRACTION MACHINES WITH STANDARD DIAGONAL BASEPLATE

| MACH. | A | B | C | D | E | F | G | H | J | K | L | M | N | P | Q | R | S | T | U |
|---------|----|--------|--------|--------|--------|--------|--------|--------|--------|--------|-------|--------|-------|-------|--------|--------|--------|--------|--------|
| #34 | 48 | 11 | 37 | 4 1/2 | 3 | 28 1/2 | 21 3/4 | 8 1/4 | 13 1/2 | 7 1/4 | 3 1/2 | 9 | 1 | 15/16 | 5 3/4 | 11 | - | - | - |
| #43/#44 | 60 | 15 1/2 | 44 1/2 | 5 7/8 | 13 1/2 | 23 1/2 | 28 3/4 | 10 3/4 | 18 | 9 1/8 | 5 1/8 | 11 1/4 | 1 5/8 | 15/16 | 7 1/4 | 14 1/2 | 7 7/8 | 6 3/8 | 8 3/4 |
| #53/#54 | 66 | 17 1/2 | 48 1/2 | 7 7/8 | 19 1/2 | 19 1/2 | 36 5/8 | 15 1/4 | 21 3/8 | 13 5/8 | 5 1/4 | 14 1/2 | 1 5/8 | 15/16 | 11 1/2 | 18 | 11 7/8 | 7 | 11 1/2 |
| #63 | 78 | 20 | 58 | 9 3/8 | 25 1/4 | 21 3/4 | 39 1/2 | 16 1/8 | 23 3/8 | 14 1/2 | 5 | 16 3/4 | 1 5/8 | 15/16 | 12 1/2 | 20 | 13 | 6 1/2 | 13 3/4 |
| #64 | 72 | 20 | 52 | 9 3/8 | 25 1/4 | 15 3/4 | 39 1/2 | 16 1/8 | 23 3/8 | 14 1/2 | 5 | 16 3/4 | 1 5/8 | 15/16 | 12 1/2 | 20 | 13 | 6 1/2 | 13 3/4 |
| #74 | 84 | 20 | 64 | 10 1/4 | 25 3/4 | 26 | 45 1/2 | 16 | 29 1/2 | 14 | 8 1/2 | 19 | 2 | 15/16 | - | - | 12 1/4 | 10 1/4 | 15 1/2 |

BULLETIN 1107

| | |
|---------|------------|
| PUR 641 | 04-12-2014 |
| | 03-07-2013 |
| | 04-15-2005 |
| | 11-13-2003 |