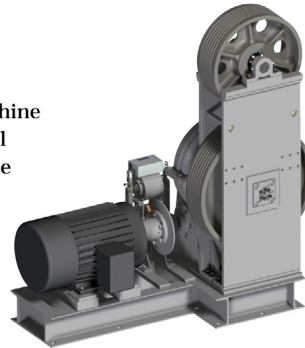


## Traction Machines-Geared

### Basement Set Traction Machines (O.D.)

The O.D. machine is equipped with a deflector sheave mounted on the machine to eliminate the need for an additional sheave independently supported by the building structure.



**#64 O.D.**

Right Hand  
Arrangement Shown  
Left Hand  
Arrangement  
Available



**#74 O.D.**

#### 4 MODELS TO CHOOSE FROM:

MACHINE	MAXIMUM SHAFT LOAD		MACHINE WEIGHT LESS MOTOR	
	lbs	kgs	lbs	kgs
#44	20,000	9,072	2,000	907
#54	26,000	11,793	2,700	1,225
#64	33,000	14,969	3,900	1,769
#74	60,000	27,216	5,900	2,676

### Standard Equipment (at no extra cost)

- Direct Current Disc Brake
- Motor Coupling Bored with Keyway
- Fabricated Steel Base
- Demountable Traction Sheave
- Demountable Bronze Gear
- Steel Worm on Integral Shaft
- Motor Mounting Pads
- Customer Name on Housing
- Supplied w/ Oil
- Demountable Deflector Sheave

### Optional Equipment:

- Drip Pans
- Mileage Recorder and Drive Assembly
- Brake Switch
- Sheave Guard
- Machine Template
- Foundation Bolts and Pipe Spacers
- Motor Mounting in Field or by H-W
- Manual Brake Release
- Drum Brake
- Rope Gripper Mounting Provisions
- VVVF-AC Hoist Motor

### When Ordering O.D. Basement Set Traction Machines, Please Specify The Following:

- Rated Car Capacity • Rated Car Speed • Roping (1:1 or 2:1) • Hand of Machine
- Number & Size of Hoist Ropes • Hoist Motor Manufacturer *(Motor Prints Required)*
- Horsepower & R.P.M. • Power Supply • Motor Mounting in Field or by H-W
- Name to be put on Upper Housing • Other Optional Equipment

# H-W EQUIPMENT

## Traction Machines-Geared

### Basement Set Traction Machines (O.D.)

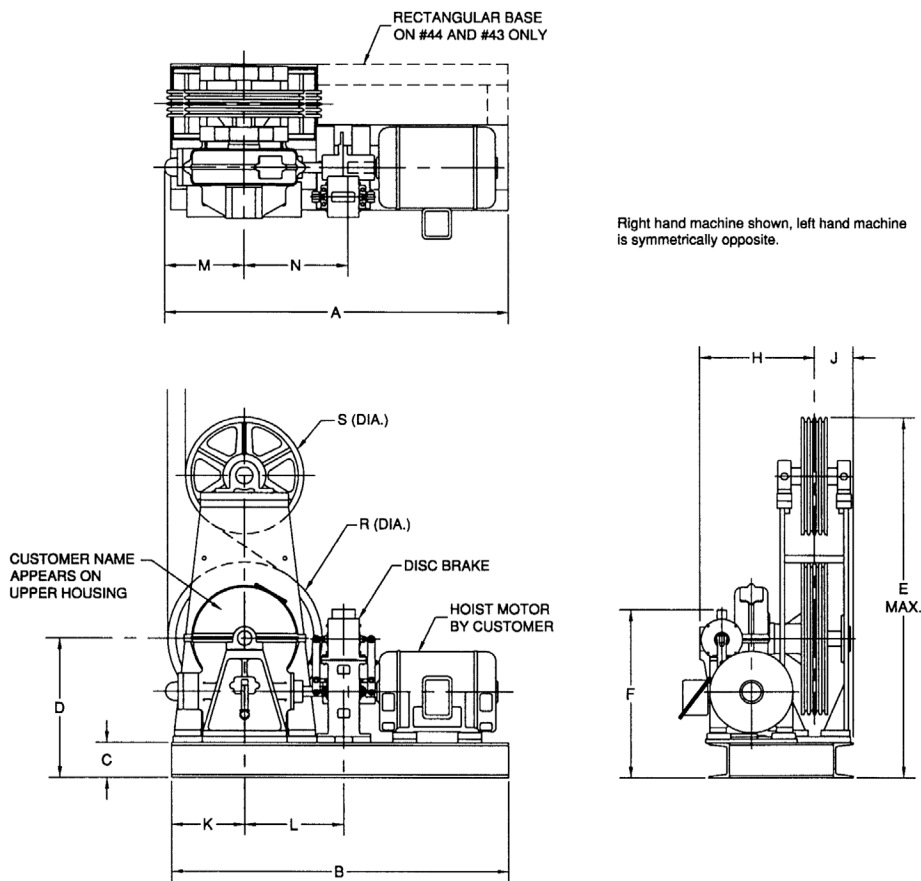
## HORSEPOWER & MACHINE SELECTION CHARTS

1:1 ROPING, 40% COUNTERBALANCE													
SPEED: CAR = MACHINE													
fpm	50	75	100	125	150	200	250	300	350	400	450	500	
m/s	0.25	0.38	0.51	0.64	0.76	1.02	1.27	1.52	1.78	2.03	2.29	2.54	
lbs	kgs												
#43/44	1000	454	3	3	5	5	7.5	7.5	10	10	12.5	15	15
	1500	680	3	5	7.5	7.5	10	12.5	12.5	15	20	20	30
	2000	907	5	7.5	7.5	10	12.5	15	20	20	25	25	40
	2500	1134	5	7.5	10	12.5	15	20	25	25	30	40	40
	3000	1361	7.5	10	12.5	15	15	25	30	30	40	40	50
	3500	1588	7.5	10	15	20	20	25	30	40	40	50	60
#53/54	4000	1814	10	12.5	20	20	25	30	40	40	50	50	75
	4500	2041	10	15	20	25	25	40	40	50	50	60	75
	5000	2268	12.5	20	20	25	30	40	50	50	60	60	75
#63/64	6000	2722	12.5	20	25	30	40	50	50	60	75	75	
#74	7000	3175	15	25	30	40	40	50	60	75	75		
CAPACITY													
CAR = MACHINE													

2:1 ROPING, 40% COUNTERBALANCE													
SPEED: Car = 1/2 Machine													
Car	fpm	25	50	75	100	125	150	175	200	225	250		
	m/s	0.13	0.25	0.38	0.51	0.64	0.76	0.89	1.02	1.14	1.27		
Machine	fpm	50	100	150	200	250	300	350	400	450	500		
	m/s	0.25	0.51	0.76	1.02	1.27	1.52	1.78	2.03	2.29	2.54		
lbs	kgs	lbs	kgs										
#43/44	1000	454	2000	907	3	5	7.5	10	10	12.5	15	15	20
	1500	680	3000	1361	5	7.5	10	12.5	15	20	20	25	30
	2000	907	4000	1814	5	10	12.5	20	20	25	25	30	40
	2500	1134	5000	2268	7.5	12.5	15	20	25	30	30	40	50
	3000	1361	6000	2722	7.5	15	20	25	30	30	40	40	50
	3500	1588	7000	3175	10	20	25	30	30	40	40	50	60
#53/54	4000	1814	8000	3629	10	20	25	30	40	40	50	50	75
	4500	2041	9000	4082	10	20	30	40	40	50	50	60	75
	5000	2268	10000	4536	12.5	25	30	40	50	50	60	75	75
#63/64	6000	2722	12000	5443	15	30	40	50	60	60	75	75	
#74	7000	3175	14000	6350	15	30	40	50	60	75	75		
MACHINE CAPACITY CAR CAPACITY													
1/2 CAR = MACHINE													

Traction Machines-Geared  
Basement Set Traction Machines (O.D.)

DIMENSIONS: INCHES [MILLIMETERS]



O.D. BASEMENT SET TRACTION MACHINE DIMENSIONS INCHES [MILLIMETERS]																	
MACH.	BRAKE	A	B	C	D	E	F	H	J	K	L	M	N	R(DIA.)		S(DIA.)	
														MIN.	MAX.	MIN.	MAX.
#43 O.D.	#90 DRUM	58 3/8 [1483]	57 [1448]	6 [152]	23 7/8 [606]	64 1/8 [1629]	36 3/4 [933]	20 [508]	6 3/4 [171]	12 1/2 [318]	16 3/4 [425]	13 7/8 [352]	17 1/2 [445]	20 [508]	28 [711]	20 [508]	25 [635]
#44 O.D.	#102 DISC	58 3/8 [1483]	57 [1448]	6 [152]	23 7/8 [606]	64 1/8 [1629]	28 7/8 [733]	20 [508]	6 3/4 [171]	12 1/2 [318]	16 3/4 [425]	13 7/8 [352]	17 9/16 [446]	20 [508]	28 [711]	20 [508]	25 [635]
#53 O.D.	#100 DRUM	67 1/4 [1708]	62 [1575]	6 [152]	26 3/4 [679]	70 7/8 [1800]	39 [991]	23 3/4 [603]	7 1/8 [181]	9 1/2 [241]	19 [483]	14 3/4 [375]	19 1/2 [495]	20 [508]	30 [762]	20 [508]	25 [635]
#54 O.D.	#102 DISC	67 1/4 [1708]	62 [1575]	6 [152]	26 3/4 [679]	70 7/8 [1800]	30 5/8 [778]	23 3/4 [603]	7 1/8 [181]	9 1/2 [241]	15 5/8 [397]	14 3/4 [375]	17 3/4 [451]	20 [508]	30 [762]	20 [508]	25 [635]
#63 O.D.	#110 DRUM	72 3/4 [1848]	66 [1676]	8 [203]	33 1/4 [845]	79 3/8 [2016]	45 [1143]	25 1/2 [648]	8 1/8 [206]	11 1/2 [292]	23 3/8 [594]	18 1/4 [464]	24 3/8 [619]	25 [635]	38 [965]	20 [508]	25 [635]
#64 O.D.	#112 DISC	72 3/4 [1848]	66 [1676]	8 [203]	33 1/4 [845]	79 3/8 [2016]	34 1/2 [876]	25 1/2 [648]	8 1/8 [206]	11 1/2 [292]	17 5/8 [448]	18 1/4 [464]	19 7/8 [505]	25 [635]	38 [965]	20 [508]	25 [635]
#74 O.D.	#120 DRUM	82 7/8 [2105]	76 [1930]	10 [254]	41 3/8 [1051]	90 1/2 [2299]	48 5/8 [1235]	31 1/2 [800]	10 3/4 [273]	12 1/2 [318]	23 5/8 [600]	19 3/8 [492]	24 3/4 [629]	32 [813]	38 [965]	25 [635]	26 [660]