

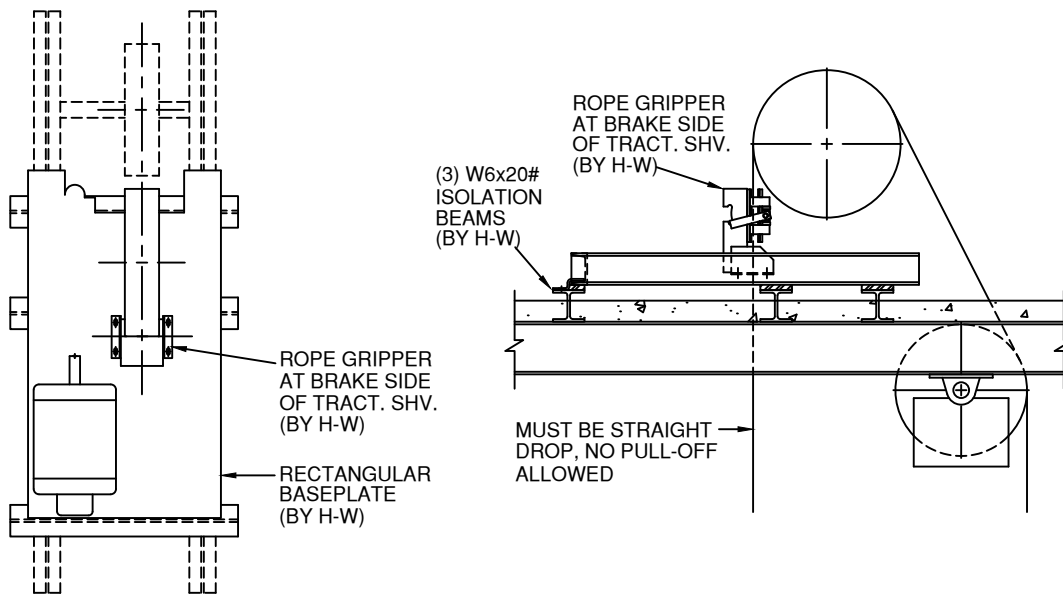


#1 Hollister-Whitney Parkway
 Quincy, IL 62305
 Phone: 217-222-0466
 Fax: 217-222-0493

Hollister-Whitney
 ELEVATOR CO. LLC

www.hollisterwhitney.com
 sales@hollisterwhitney.com
 layouts@hollisterwhitney.com
 engineering@hollisterwhitney.com

**OH MACHINE MOUNTING FOR ROPE GRIPPER
 LOCATED AT BRAKE SIDE OF TRACTION SHEAVE**



OVERHEAD MACHINE MOUNTING FOR ROPE GRIPPER LOCATED AT BRAKE SIDE OF TRACTION SHEAVE IS AVAILABLE FOR THE COMBINATIONS LISTED BELOW			
MACHINE	BRAKE	ROPE GRIPPER	TRACTION SHEAVE DIA.
#34 O.H.	#92 DISC	#620	22", 24", 25"
#44 O.H.	#102 DISC	#620	22", 24", 25", 26", 28"
		#622	22", 24", 25", 26", 28"
#54 O.H.	#102 DISC	#620	22", 25", 26", 28", 30"
		#622	25", 26", 28", 30"
#64 O.H.	#112 DISC	#622	28", 30", 32", 34", 36", 38"
		#624	32", 34", 36", 38"
		#626	32", 34", 36", 38"
#74 O.H.	#120 DRUM	#622	32", 34", 36", 38"
		#624	32", 34", 36", 38"
		#626	32", 34", 36", 38"

38" DIA. TRACTION SHEAVE IS SPECIAL
 ADDITIONAL RESTRICTIONS APPLY
 (CONSULT WITH ENGINEERING STAFF)

NEMA 4 ROPE GRIPPER USED WITH
 32" DIA. TRACTION SHEAVE ONLY