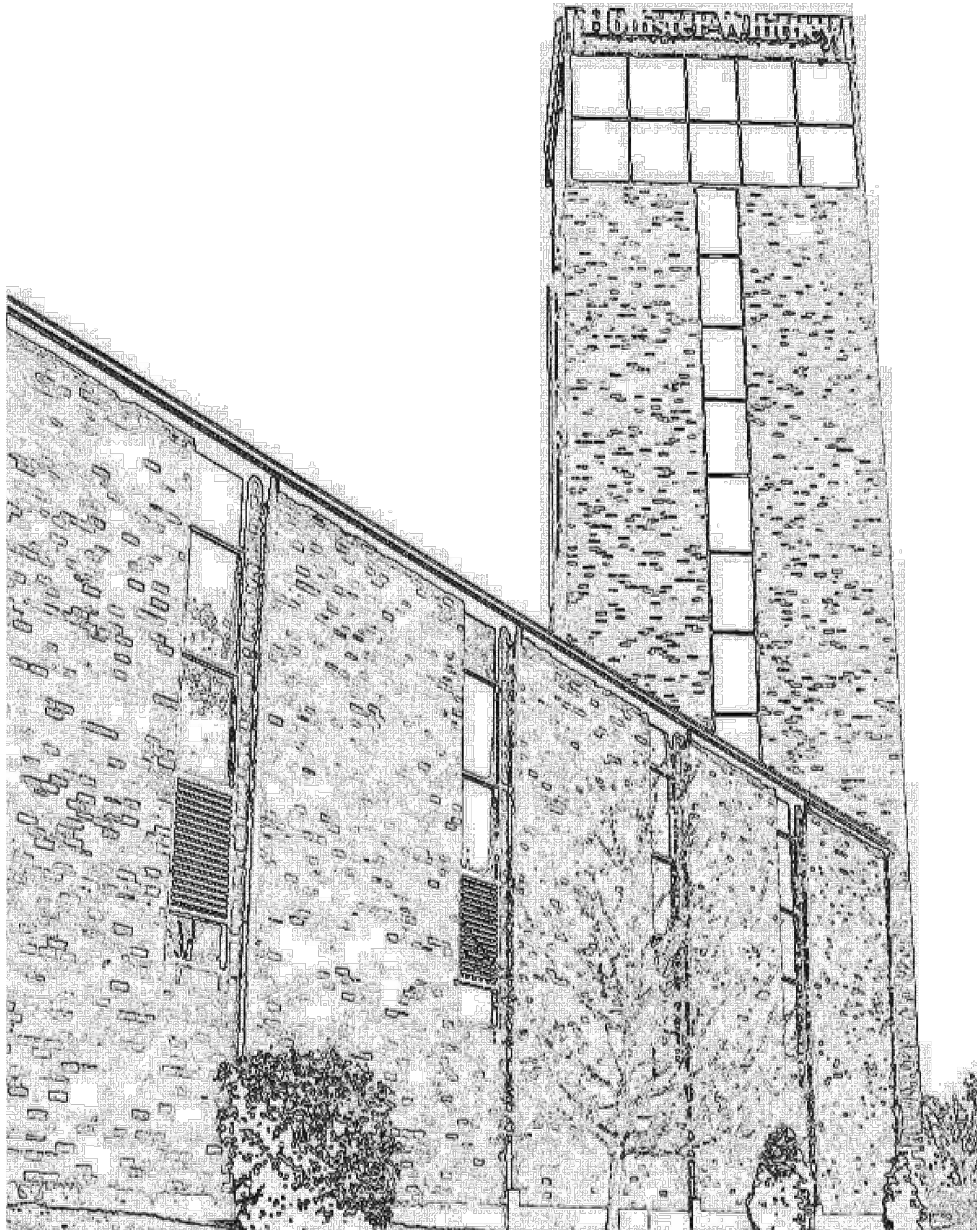




Hollister-Whitney
ELEVATOR CO. LLC

#1 HOLLISTER-WHITNEY PARKWAY
QUINCY, ILLINOIS 62305
Phone: 217-222-0466
Web: www.hollisterwhitney.com
Email: info@hollisterwhitney.com

OVERHEAD GEARED TRACTION DESIGN GUIDE





#1 HOLLISTER-WHITNEY PARKWAY
QUINCY, ILLINOIS 62305
Phone: 217-222-0466
Web: www.hollisterwhitney.com
Email: info@hollisterwhitney.com

CONTENTS:

IBC Stretcher Access	P. 3
Passenger, Front Opening, CWT at Rear	P. 4-5
Passenger, Front Opening, CWT at Side	P. 6-7
Passenger, Front Opening, CWT at Side, Glass-Back Cab	P. 8-9
Passenger, Front & Rear Opening, CWT at Side.....	P. 10-11
Passenger, Front & Side Opening (Cornerpost), CWT at Rear	P. 12-13
Passenger, Front & Side Opening (Cornerpost), CWT at Side	P. 14-15
Hospital/Service, Front Opening, CWT at Side.....	P. 16-17
Hospital/Service, Front & Rear Opening, CWT at Side.....	P. 18-19

NOTICE: This publication is for general informational purposes only. Hollister-Whitney Elevator Co. LLC reserves the right to make changes at any time to the information contained within without prior notice.

Copyright © 2018
Hollister-Whitney Elevator Co. LLC

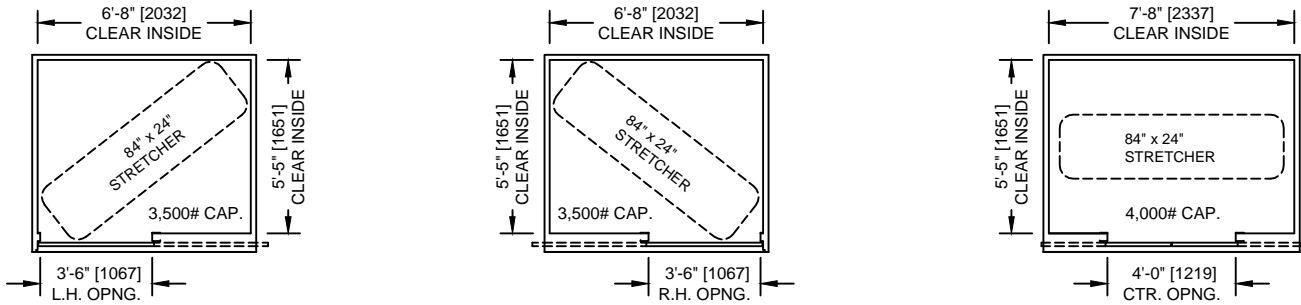


OVERHEAD GEARED TRACTION DESIGN GUIDE

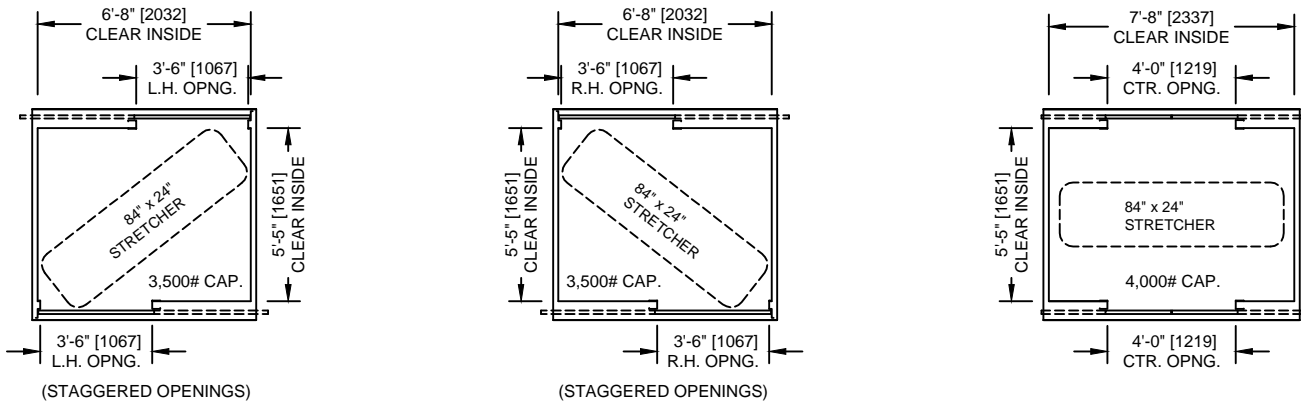
IBC Stretcher Access

STRETCHER REQUIREMENTS:

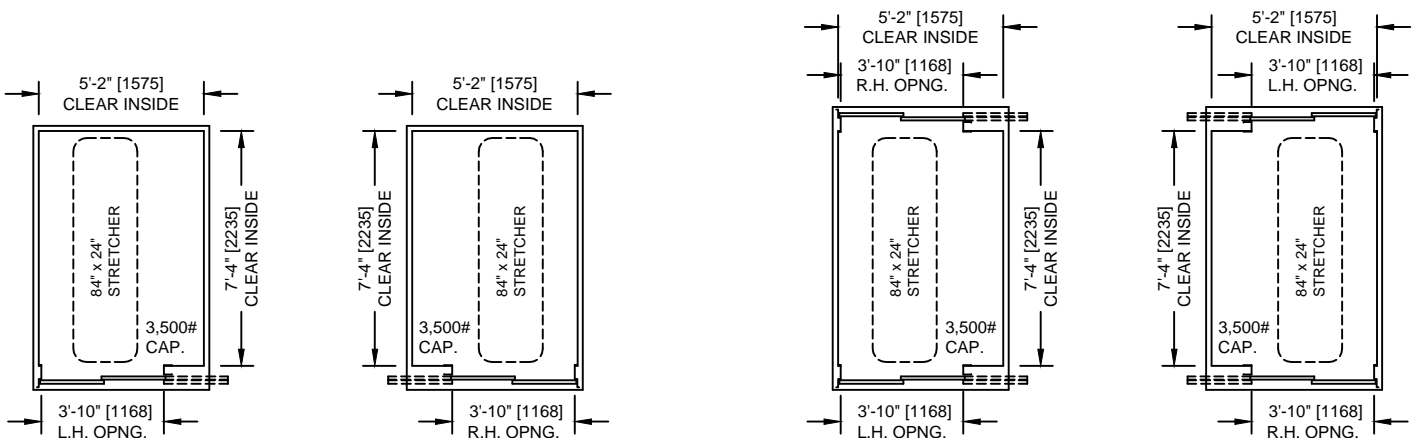
Section 3002.4 of the International Building Code (IBC) states that "where elevators in buildings four or more stories above, or four or more stories below grade plane, at least one elevator shall be provided for Fire Department emergency access to all floors". According to the IBC Code, the elevator should accommodate an open stretcher in the horizontal position 24 inches x 84 inches with not less than 5-inch radius corners. The following configurations and minimum dimensions comply with these IBC requirements:



PASSENGER ELEVATORS WITH FRONT OPENING DOOR



PASSENGER ELEVATORS WITH FRONT & REAR OPENING DOORS



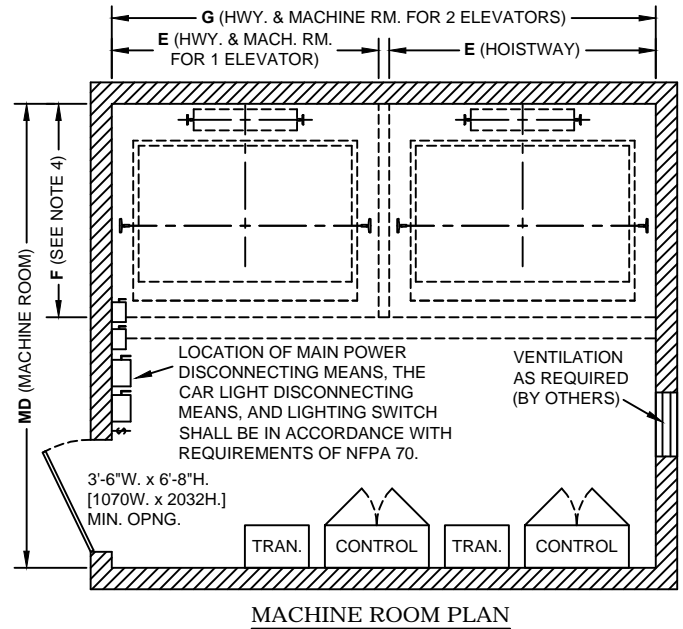
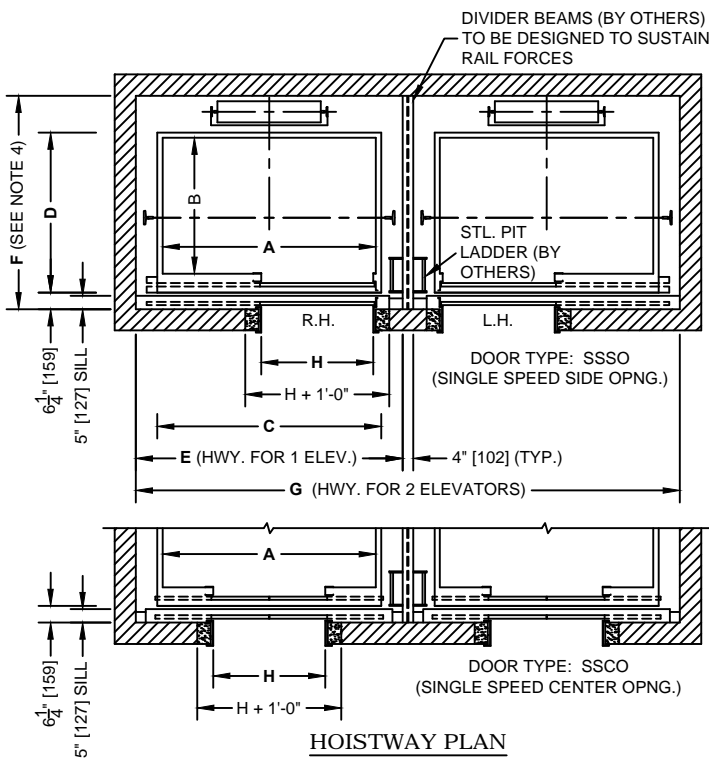
HOSPITAL / SERVICE ELEVATORS WITH FRONT OPENING DOORS

HOSPITAL / SERVICE ELEVATORS WITH FRONT & REAR OPENING DOORS



OVERHEAD GEARED TRACTION DESIGN GUIDE

Passenger, Front Opening, CWT at Rear



NOTES:

1. Dimensions shown are based on standard sizes and capacities for typical building installations and should only be used for preliminary planning. Contact H-W for additional information before proceeding with construction or for assistance with existing or special conditions.
2. Dimensional data complies with the ASME A17.1 / CSA B44 Safety Code for Elevators and Escalators. State or local codes must be used if they differ from national code.
3. Interior cab dimensions may vary depending on the interior finishes. The platform and hoistway sizes should be increased accordingly for extra thick cab finishes.
4. Counterweight safeties are required if there is "occupied space" below the pit. Add 8" [203] to the hoistway and machine room depths listed.

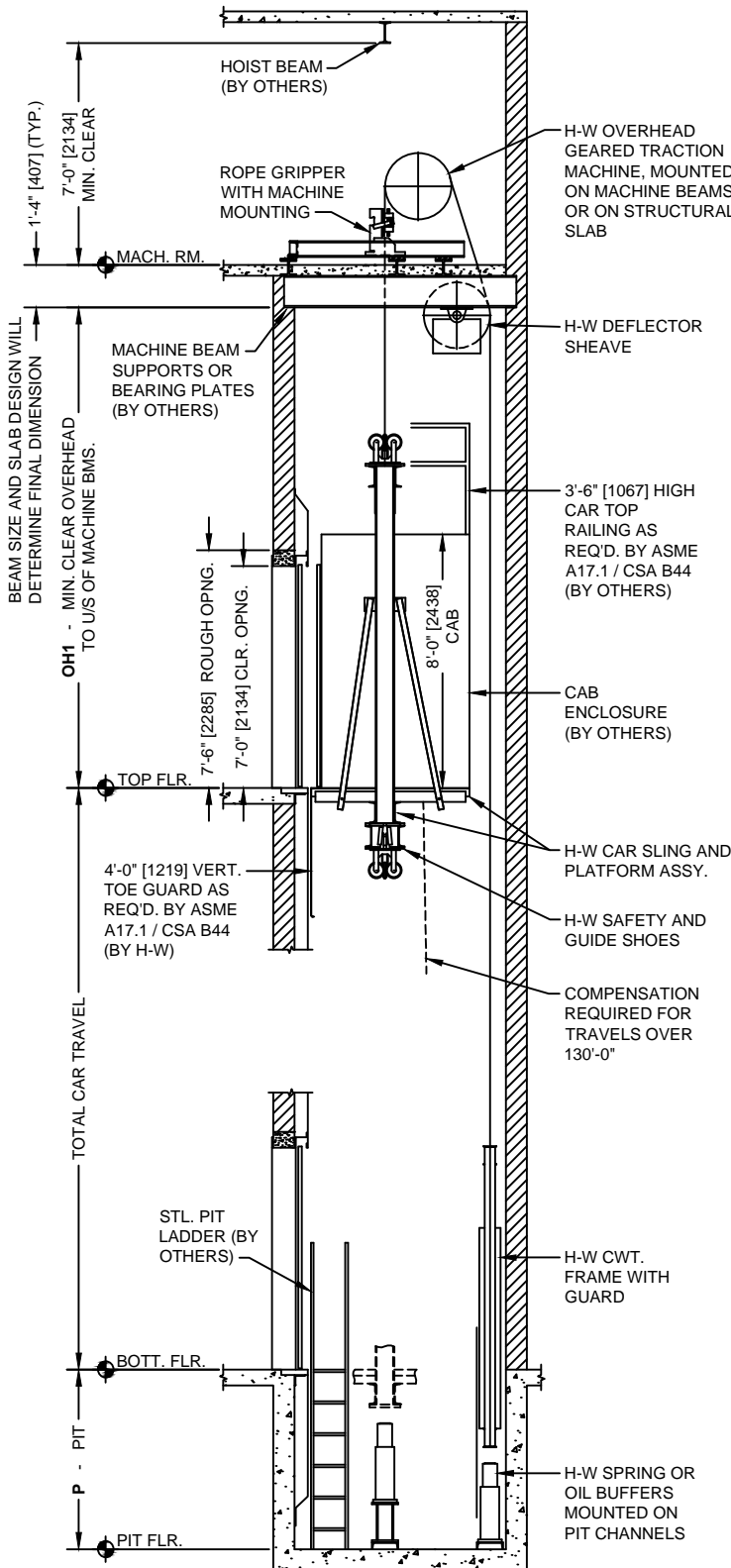
HOISTWAY AND MACHINE ROOM DIMENSIONS															
CAPACITY lb [kg]	INSIDE AREA (MAX. SF ALLOWED PER CODE)	H CLEAR OPENING WIDTH ft [mm]	OPENING TYPE (1)	MINIMUM CLEAR CAB INSIDE		PLATFORM SIZE		HOISTWAY SIZE (NON-SEISMIC)			HOISTWAY SIZE (SEISMIC ZONE 2 OR GREATER)			MACH. ROOM MD DEPTH ft [mm]	
				A WIDTH ft [mm]	B DEPTH ft [mm]	C WIDTH ft [mm]	D DEPTH ft [mm]	E CLR. WIDTH ft [mm]	F CLR. DEPTH ft [mm]	G (DUPLEX) WALL TO WALL ft [mm]	E CLR. WIDTH ft [mm]	F CLR. DEPTH ft [mm]	G (DUPLEX) WALL TO WALL ft [mm]		
2,000 [900]	24.2 [2.25]	3'-0" [914]	SSSO (a)	5'-8" [1727]	4'-3" [1295]	6'-0" [1829]	5'-0" [1524]	7'-4" [2235]	6'-8" [2032]	15'-0" [4572]	7'-8" [2337]	6'-8" [2032]	15'-8" [4775]	14'-6" [4420]	
2,500 [1160]	29.1 [2.70]	3'-6" [1067]	SSSO (b) SSCO (a)	6'-8" [2032]	4'-3" [1295]	7'-0" [2134]	5'-0" [1524]	8'-4" [2540]	6'-8" [2032]	17'-0" [5182]	8'-8" [2642]	6'-8" [2032]	17'-8" [5385]	14'-6" [4420]	
3,000 [1380]	33.7 [3.13]	3'-6" [1067]	SSSO (b) SSCO (a)	6'-8" [2032]	4'-9" [1448]	7'-0" [2134]	5'-6" [1676]	8'-4" [2540]	7'-2" [2184]	17'-0" [5182]	8'-8" [2642]	7'-2" [2184]	17'-8" [5385]	15'-0" [4572]	
3,500 [1600]	38.0 [3.53]	3'-6" [1067]	SSSO (c) SSCO (b)	6'-8" [2032]	5'-5" [1651]	7'-0" [2134]	6'-2" [1880]	8'-4" [2540]	7'-10" [2388]	17'-0" [5182]	8'-8" [2642]	7'-10" [2388]	17'-8" [5385]	15'-8" [4775]	
4,000 [1815]	42.2 [3.92]	3'-6" [1067]	SSSO (c)	7'-8" [2337]	5'-5" [1651]	8'-0" [2438]	6'-2" [1880]	9'-4" [2845]	7'-10" [2388]	19'-0" [5791]	9'-8" [2946]	7'-10" [2388]	19'-8" [5994]	15'-8" [4775]	
4,000 [1815]	42.2 [3.92]	4'-0" [1219]	SSCO (c)	7'-8" [2337]	5'-5" [1651]	8'-0" [2438]	6'-2" [1880]	9'-4" [2845]	7'-10" [2388]	19'-0" [5791]	9'-8" [2946]	7'-10" [2388]	19'-8" [5994]	15'-8" [4775]	

a. These car dimensions and entrance types provide wheelchair accessibility.
 b. These car dimensions and entrance types provide wheelchair accessibility and accommodate an ambulance type stretcher of (76"x24") in the horizontal position.
 c. These car dimensions and entrance types provide wheelchair accessibility and accommodate an ambulance type stretcher of (84"x24") in the horizontal position as required by the IBC.

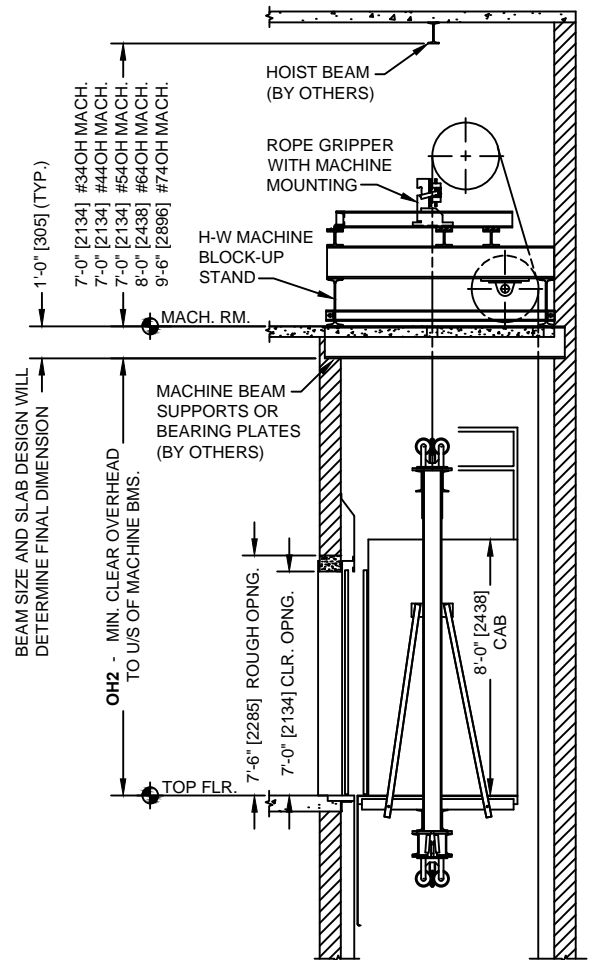


OVERHEAD GEARED TRACTION DESIGN GUIDE

Passenger, Front Opening, CWT at Rear



HOISTWAY SECTION
(DEFLECTOR SHV. AT TOP OF HOISTWAY)



HOISTWAY SECTION
(DEFLECTOR SHV. IN MACHINE ROOM)

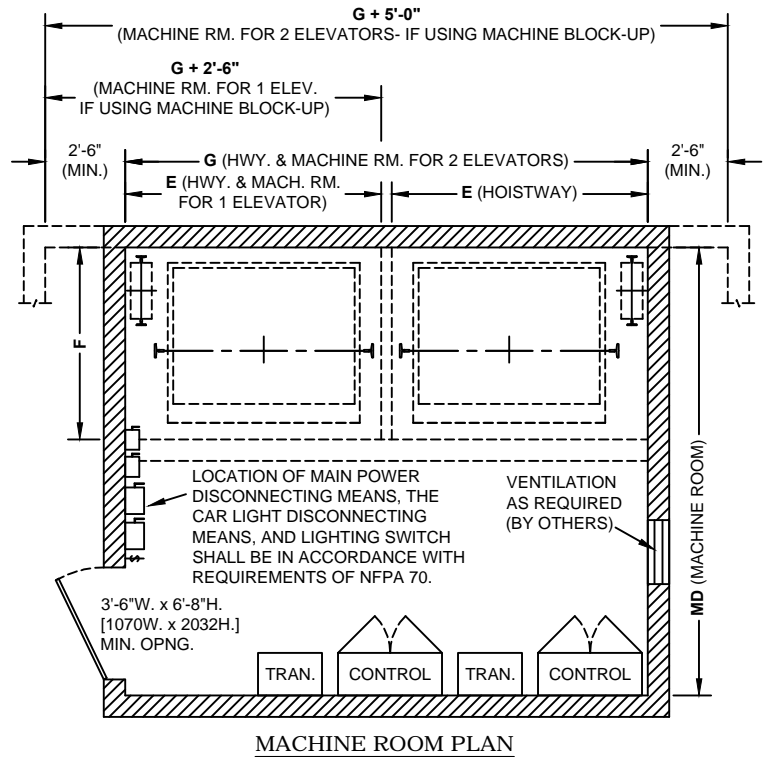
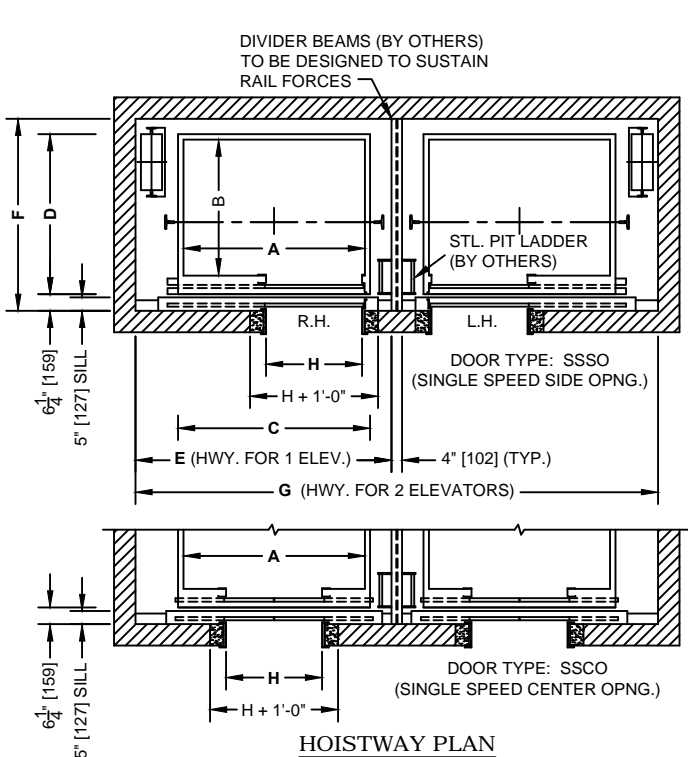
PIT AND OVERHEAD DIMENSIONS			
RATED SPEED fpm [m/s]	PIT DEPTH	MIN. OVERHEAD CLEAR TO U/S BMS. (DEFLECTOR SHV. AT TOP OF HOISTWAY)	MIN. OVERHEAD CLEAR TO U/S BMS. (DEFLECTOR SHV. IN MACHINE ROOM)
		OH1	OH2
100 - 200 fpm [.50 - 1.00 m/s]	5'-6" [1676]	14'-7" [4445]	13'-5" [4089]
250 - 350 fpm [1.25 - 1.75m/s]	5'-8" [1727]	15'-2" [4623]	14'-0" [4267]
400 fpm [2.00 m/s]	6'-0" [1829]	15'-6" [4725]	14'-4" [4369]
450 fpm [2.25 m/s]	6'-8" [2032]	16'-1" [4902]	14'-11" [4547]
500 fpm [2.50 m/s]	6'-8" [2032]	16'-3" [4953]	15'-1" [4597]

Overhead dimensions (OH) are based on an 8'-0" [2438mm] cab height with a 7'-0" [2134mm] door. For 9'-0" [2745] cab use OH + 1'-0" [305]. For 10'-0" [3050] cab use OH + 2'-0" [610].



OVERHEAD GEARED TRACTION DESIGN GUIDE

Passenger, Front Opening, CWT at Side



NOTES:

1. Dimensions shown are based on standard sizes and capacities for typical building installations and should only be used for preliminary planning. Contact H-W for additional information before proceeding with construction or for assistance with existing or special conditions.
2. Dimensional data complies with the ASME A17.1 / CSA B44 Safety Code for Elevators and Escalators. State or local codes must be used if they differ from national code.
3. Interior cab dimensions may vary depending on the interior finishes. The platform and hoistway sizes should be increased accordingly for extra thick cab finishes.
4. Note: This arrangement does not have adequate space to accommodate counterweight safeties. Therefore, "occupied space" below the pit is not permitted with this arrangement.

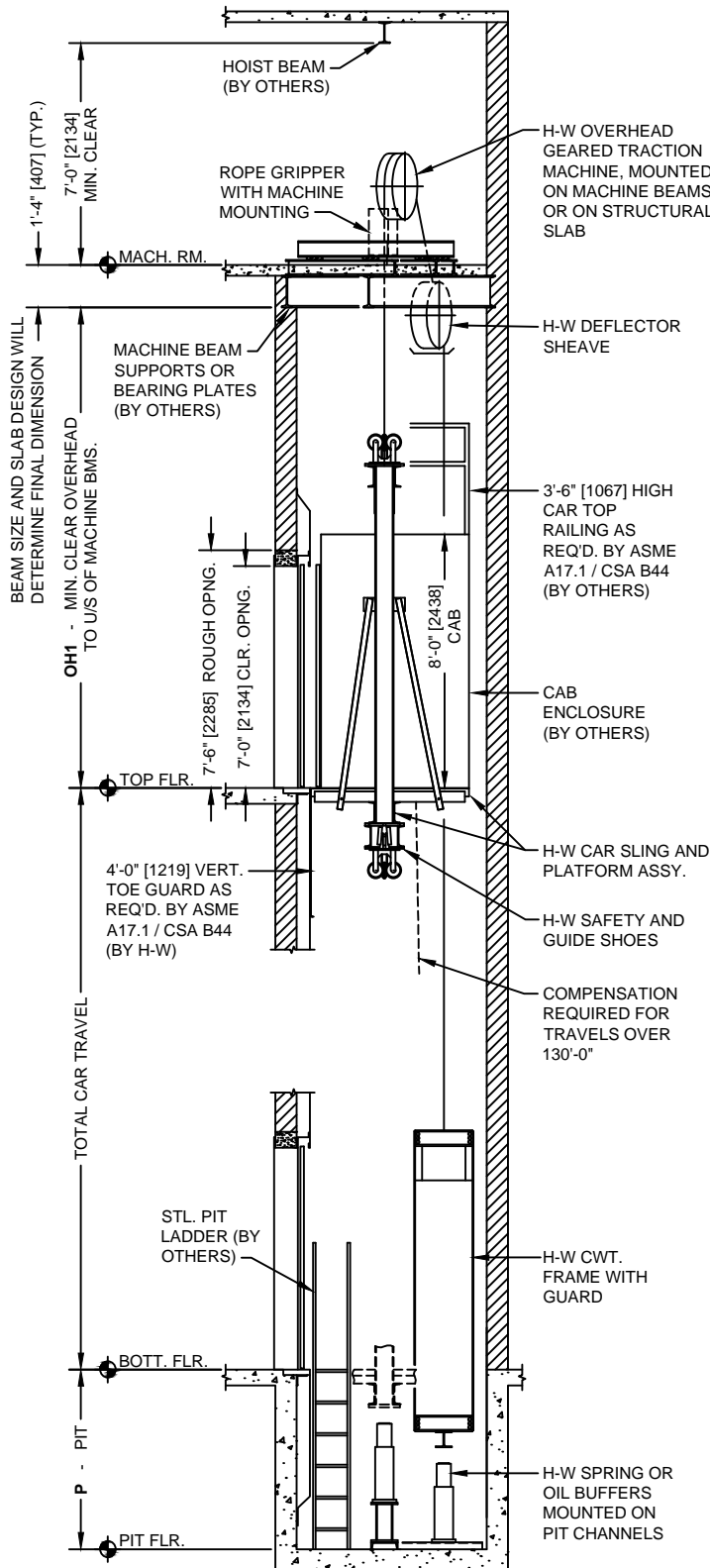
HOISTWAY AND MACHINE ROOM DIMENSIONS														
CAPACITY lb [kg]	INSIDE AREA (MAX. SF ALLOWED PER CODE)	H CLEAR OPENING WIDTH ft [mm]	OPENING TYPE (1)	MINIMUM CLEAR CAB INSIDE		PLATFORM SIZE		HOISTWAY SIZE (NON-SEISMIC)			HOISTWAY SIZE (SEISMIC ZONE 2 OR GREATER)			MACH. ROOM
				A WIDTH ft [mm]	B DEPTH ft [mm]	C WIDTH ft [mm]	D DEPTH ft [mm]	E CLR. WIDTH ft [mm]	F CLR. DEPTH ft [mm]	G (DUPLEX) WALL TO WALL ft [mm]	E CLR. WIDTH ft [mm]	F CLR. DEPTH ft [mm]	G (DUPLEX) WALL TO WALL ft [mm]	MD DEPTH ft [mm]
2,000 [900]	24.2 [2.25]	3'-0" [914]	SSSO (a)	5'-8" [1727]	4'-3" [1295]	6'-0" [1829]	5'-0" [1524]	8'-0" [2439]	6'-0" [1829]	16'-4" [4979]	8'-2" [2489]	6'-0" [1829]	16'-8" [5080]	14'-0" [4267]
2,500 [1160]	29.1 [2.70]	3'-6" [1067]	SSSO (b) SSCO (a)	6'-8" [2032]	4'-3" [1295]	7'-0" [2134]	5'-0" [1524]	9'-0" [2743]	6'-0" [1829]	18'-4" [5588]	9'-2" [2794]	6'-0" [1829]	18'-8" [5690]	14'-0" [4267]
3,000 [1380]	33.7 [3.13]	3'-6" [1067]	SSSO (b) SSCO (a)	6'-8" [2032]	4'-9" [1448]	7'-0" [2134]	5'-6" [1676]	9'-0" [2743]	6'-6" [1981]	18'-4" [5588]	9'-2" [2794]	6'-6" [1981]	18'-8" [5690]	14'-6" [4420]
3,500 [1600]	38.0 [3.53]	3'-6" [1067]	SSSO (c) SSCO (b)	6'-8" [2032]	5'-5" [1651]	7'-0" [2134]	6'-2" [1880]	9'-2" [2794]	7'-3" [2210]	18'-8" [5690]	9'-4" [2845]	7'-3" [2210]	19'-0" [5791]	15'-0" [4572]
4,000 [1815]	42.2 [3.92]	3'-6" [1067]	SSSO (c)	7'-8" [2337]	5'-5" [1651]	8'-0" [2438]	6'-2" [1880]	10'-4" [3150]	7'-3" [2210]	21'-0" [6401]	10'-6" [3200]	7'-3" [2210]	21'-4" [6502]	15'-0" [4572]
4,000 [1815]	42.2 [3.92]	4'-0" [1219]	SSCO (c)	7'-8" [2337]	5'-5" [1651]	8'-0" [2438]	6'-2" [1880]	10'-4" [3150]	7'-3" [2210]	21'-0" [6401]	10'-6" [3200]	7'-3" [2210]	21'-4" [6502]	15'-0" [4572]

a. These car dimensions and entrance types provide wheelchair accessibility.
 b. These car dimensions and entrance types provide wheelchair accessibility and accommodate an ambulance type stretcher of (76"x24") in the horizontal position.
 c. These car dimensions and entrance types provide wheelchair accessibility and accommodate an ambulance type stretcher of (84"x24") in the horizontal position as required by the IBC.

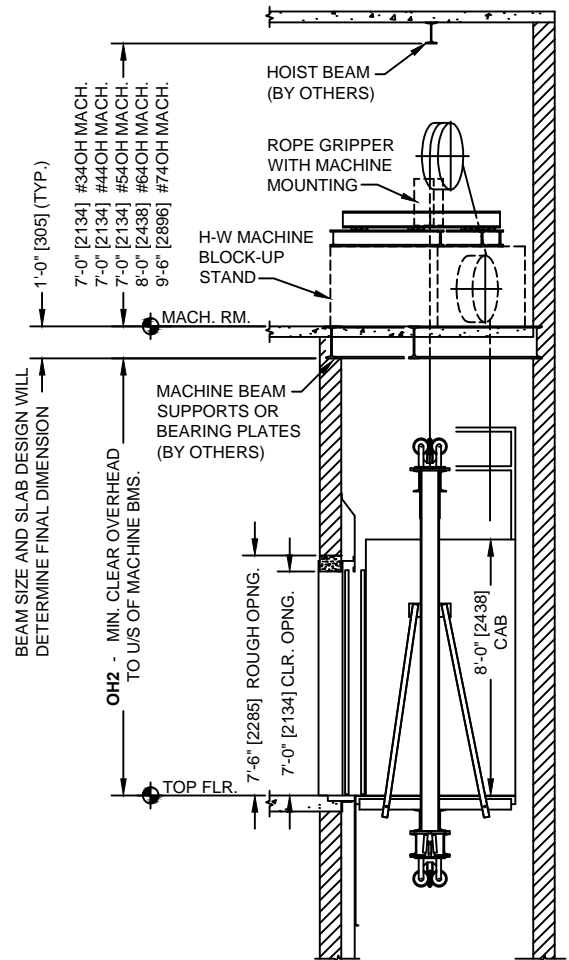


OVERHEAD GEARED TRACTION DESIGN GUIDE

Passenger, Front Opening, CWT at Side



HOISTWAY SECTION
(DEFLECTOR SHV. AT TOP OF HOISTWAY)



HOISTWAY SECTION
(DEFLECTOR SHV. IN MACHINE ROOM)

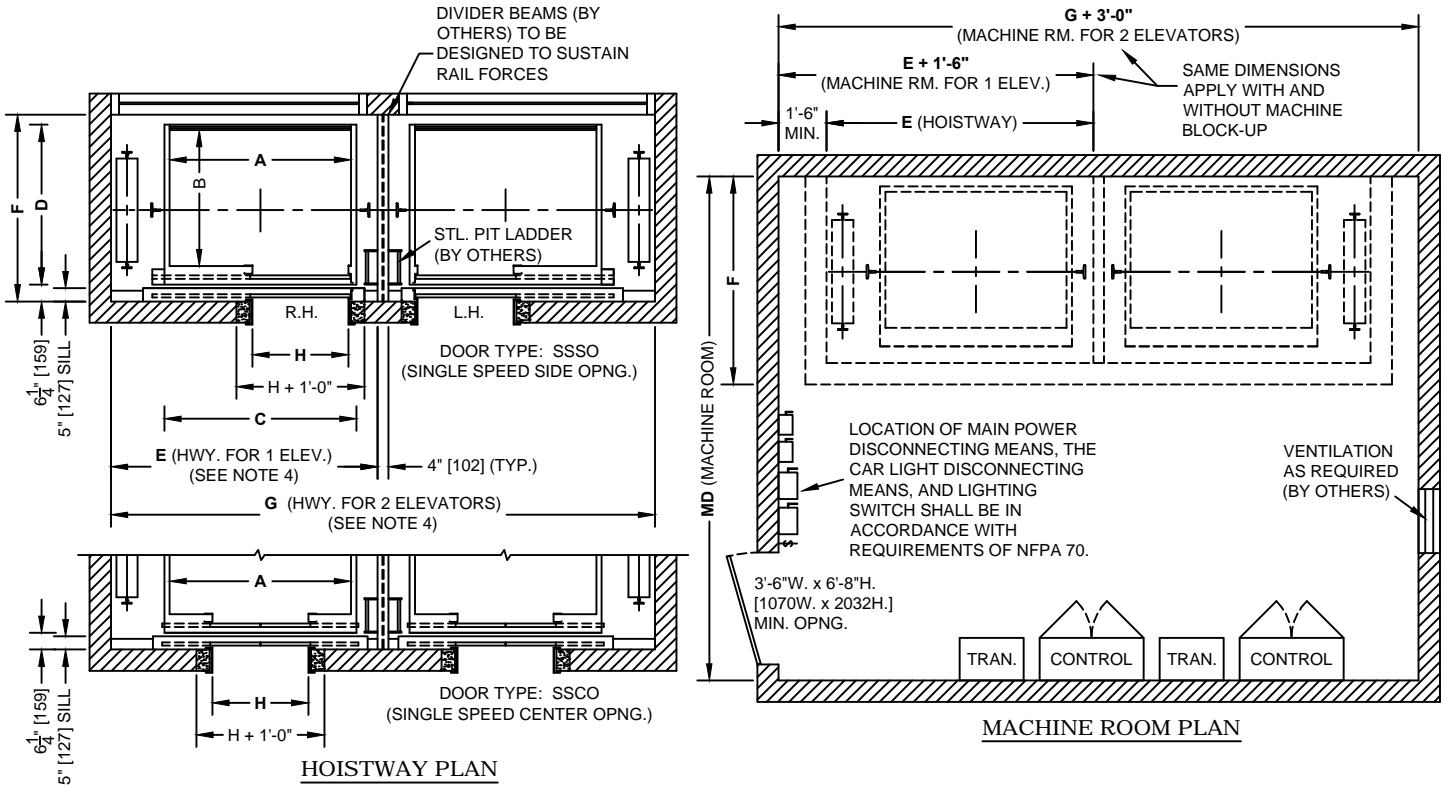
PIT AND OVERHEAD DIMENSIONS			
RATED SPEED fpm [m/s]	PIT DEPTH P	MIN. OVERHEAD CLEAR TO U/S BMS. (DEFLECTOR SHV. AT TOP OF HOISTWAY)	MIN. OVERHEAD CLEAR TO U/S BMS. (DEFLECTOR SHV. IN MACHINE ROOM)
		OH1	OH2
100 - 200 fpm [.50 - 1.00 m/s]	5'-6" [1676]	14'-7" [4445]	13'-5" [4089]
250 - 350 fpm [1.25 - 1.75m/s]	5'-8" [1727]	15'-2" [4623]	14'-0" [4267]
400 fpm [2.00 m/s]	6'-0" [1829]	15'-6" [4725]	14'-4" [4369]
450 fpm [2.25 m/s]	6'-8" [2032]	16'-1" [4902]	14'-11" [4547]
500 fpm [2.50 m/s]	6'-8" [2032]	16'-3" [4953]	15'-1" [4597]

Overhead dimensions (OH) are based on an 8'-0" [2438mm] cab height with a 7'-0" [2134mm] door. For 9'-0" [2745] cab use OH + 1'-0" [305]. For 10'-0" [3050] cab use OH + 2'-0" [610].



OVERHEAD GEARED TRACTION DESIGN GUIDE

Passenger, Front Opening, CWT at Side, Glass-Back Cab



NOTES:

1. Dimensions shown are based on standard sizes and capacities for typical building installations and should only be used for preliminary planning. Contact H-W for additional information before proceeding with construction or for assistance with existing or special conditions.
2. Dimensional data complies with the ASME A17.1 / CSA B44 Safety Code for Elevators and Escalators. State or local codes must be used if they differ from national code.
3. Interior cab dimensions may vary depending on the interior finishes. The platform and hoistway sizes should be increased accordingly for extra thick cab finishes.
4. Counterweight safeties are required if there is "occupied space" below the pit. Add 10" [254] to the hoistway and machine room widths listed for each elevator.

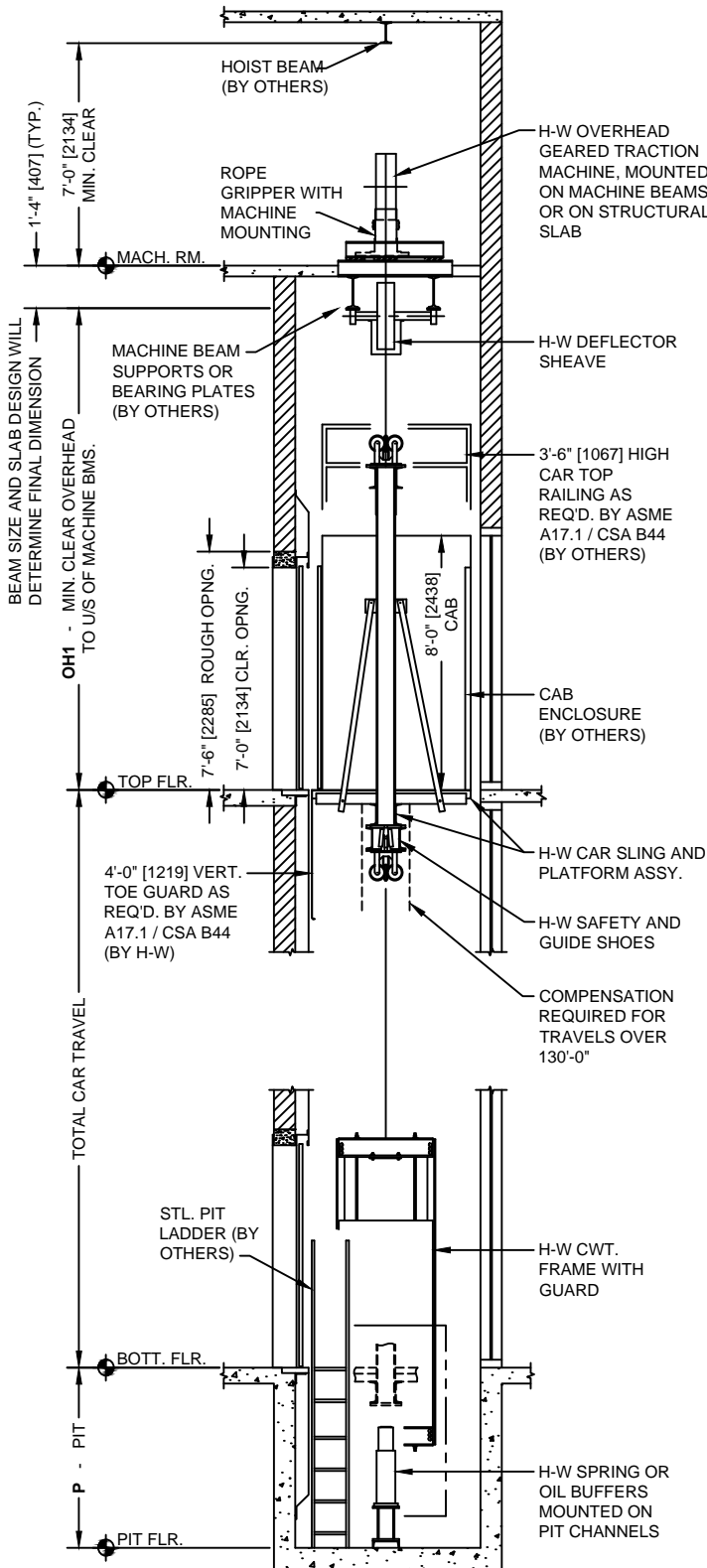
HOISTWAY AND MACHINE ROOM DIMENSIONS														
CAPACITY lb [kg]	INSIDE AREA (MAX. SF ALLOWED PER CODE)	H CLEAR OPENING WIDTH ft [mm]	OPENING TYPE (1)	MINIMUM CLEAR CAB INSIDE		PLATFORM SIZE		HOISTWAY SIZE (NON-SEISMIC)			HOISTWAY SIZE (SEISMIC ZONE 2 OR GREATER)			MACH. ROOM
				A WIDTH ft [mm]	B DEPTH ft [mm]	C WIDTH ft [mm]	D DEPTH ft [mm]	E CLR. WIDTH ft [mm]	F CLR. DEPTH ft [mm]	G (DUPLEX) WALL TO WALL ft [mm]	E CLR. WIDTH ft [mm]	F CLR. DEPTH ft [mm]	G (DUPLEX) WALL TO WALL ft [mm]	MD DEPTH ft [mm]
2,000 [900]	24.2 [2.25]	3'-0" [914]	SSSO (a)	5'-8" [1727]	4'-3" [1295]	6'-0" [1829]	5'-0" [1524]	8'-4" [2540]	5'-10" [1778]	17'-0" [5182]	8'-6" [2591]	5'-10" [1778]	17'-4" [5284]	14'-0" [4268]
2,500 [1160]	29.1 [2.70]	3'-6" [1067]	SSSO (b) SSCO (a)	6'-8" [2032]	4'-3" [1295]	7'-0" [2134]	5'-0" [1524]	9'-4" [2845]	5'-10" [1778]	19'-0" [5791]	9'-6" [2896]	5'-10" [1778]	19'-4" [5893]	14'-0" [4268]
3,000 [1380]	33.7 [3.13]	3'-6" [1067]	SSSO (b) SSCO (a)	6'-8" [2032]	4'-9" [1448]	7'-0" [2134]	5'-6" [1676]	9'-4" [2845]	6'-4" [1930]	19'-0" [5791]	9'-6" [2896]	6'-4" [1930]	19'-4" [5893]	14'-6" [4420]
3,500 [1600]	38.0 [3.53]	3'-6" [1067]	SSSO (c) SSCO (b)	6'-8" [2032]	5'-5" [1651]	7'-0" [2134]	6'-2" [1880]	9'-4" [2845]	7'-0" [2134]	19'-0" [5791]	9'-6" [2896]	7'-0" [2134]	19'-4" [5893]	15'-2" [4623]
4,000 [1815]	42.2 [3.92]	3'-6" [1067]	SSSO (c)	7'-8" [2337]	5'-5" [1651]	8'-0" [2438]	6'-2" [1880]	10'-4" [3150]	7'-0" [2134]	21'-0" [6401]	10'-6" [3201]	7'-0" [2134]	21'-4" [6503]	15'-2" [4623]
4,000 [1815]	42.2 [3.92]	4'-0" [1219]	SSCO (c)	7'-8" [2337]	5'-5" [1651]	8'-0" [2438]	6'-2" [1880]	10'-4" [3150]	7'-0" [2134]	21'-0" [6401]	10'-6" [3201]	7'-0" [2134]	21'-4" [6503]	15'-2" [4623]

a. These car dimensions and entrance types provide wheelchair accessibility.
b. These car dimensions and entrance types provide wheelchair accessibility and accommodate an ambulance type stretcher of (76"x24") in the horizontal position.
c. These car dimensions and entrance types provide wheelchair accessibility and accommodate an ambulance type stretcher of (84"x24") in the horizontal position as required by the IBC.

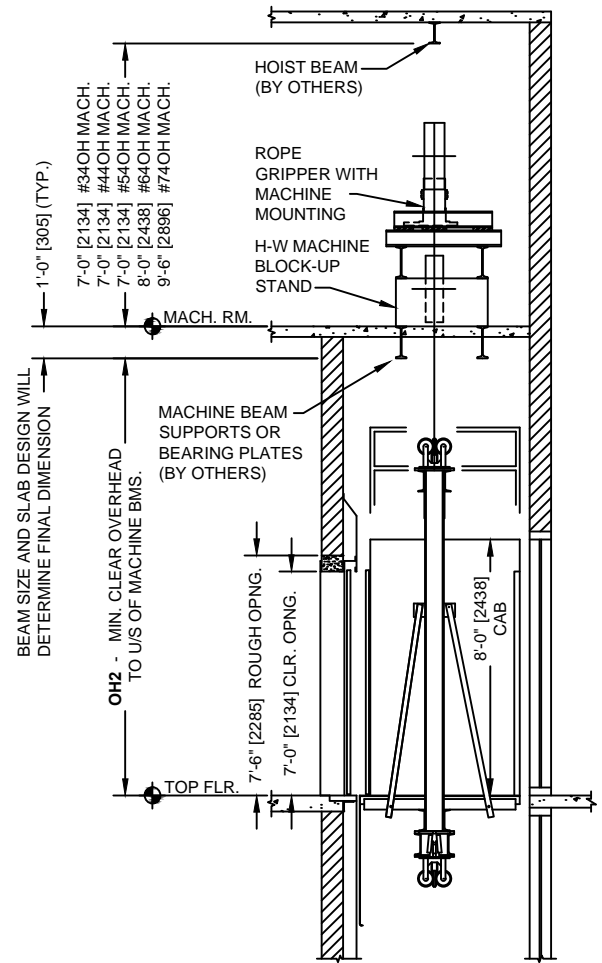


OVERHEAD GEARED TRACTION DESIGN GUIDE

Passenger, Front Opening, CWT at Side, Glass-Back Cab



HOISTWAY SECTION (DEFLECTOR SHV. AT TOP OF HOISTWAY)



HOISTWAY SECTION (DEFLECTOR SHV. IN MACHINE ROOM)

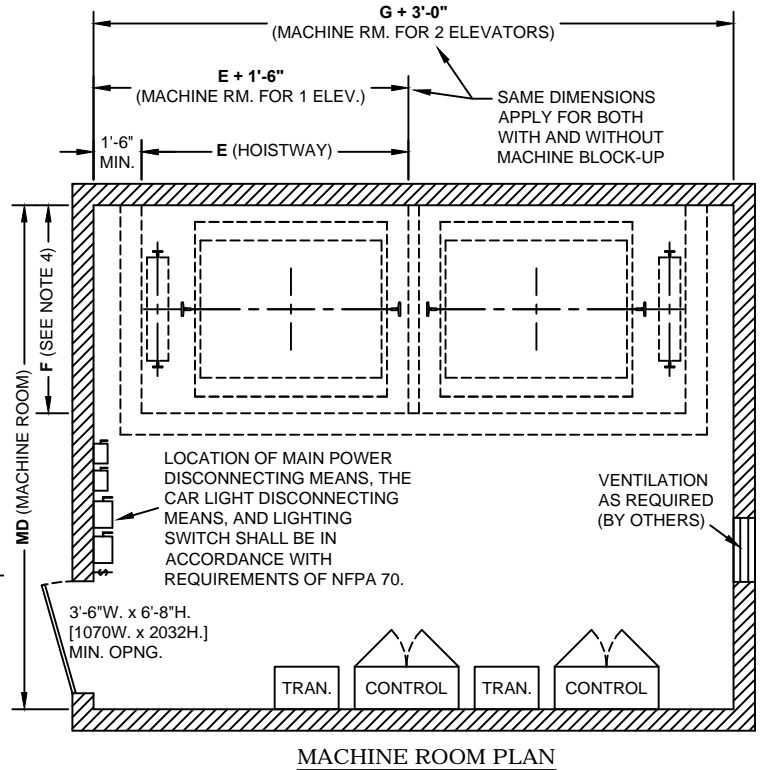
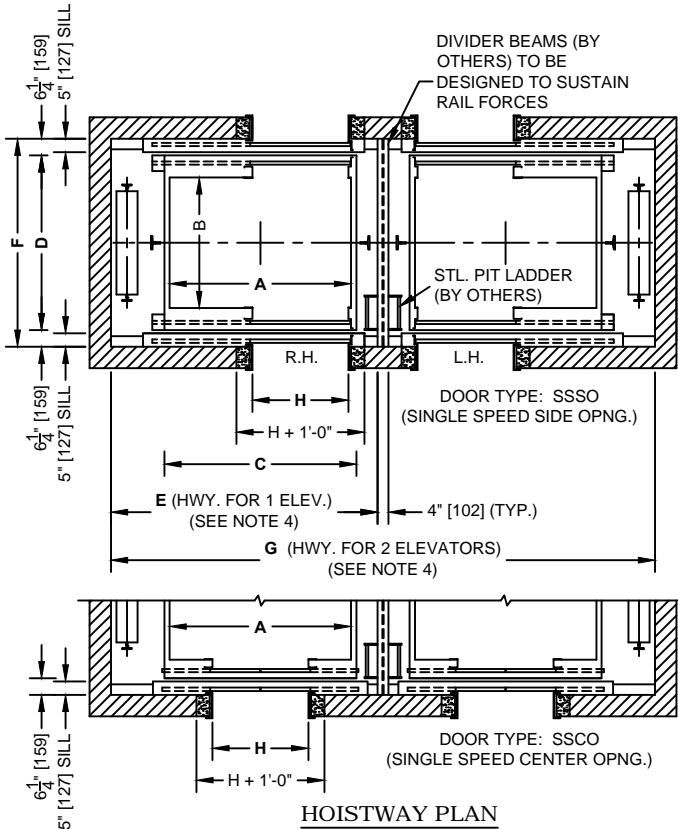
PIT AND OVERHEAD DIMENSIONS			
RATED SPEED fpm [m/s]	PIT DEPTH P	MIN. OVERHEAD CLEAR TO U/S BMS. (DEFLECTOR SHV. AT TOP OF HOISTWAY)	MIN. OVERHEAD CLEAR TO U/S BMS. (DEFLECTOR SHV. IN MACHINE ROOM)
		OH1	OH2
100 - 200 fpm [.50 - 1.00 m/s]	5'-6" [1676]	14'-11" [4547]	13'-5" [4089]
250 - 350 fpm [1.25 - 1.75m/s]	5'-8" [1727]	15'-6" [4724]	14'-0" [4267]
400 fpm [2.00 m/s]	6'-0" [1829]	15'-10" [4826]	14'-4" [4369]
450 fpm [2.25 m/s]	6'-8" [2032]	16'-5" [5004]	14'-11" [4547]
500 fpm [2.50 m/s]	6'-8" [2032]	16'-7" [5055]	15'-1" [4597]

Overhead dimensions (OH) are based on an 8'-0" [2438mm] cab height with a 7'-0" [2134mm] door. For 9'-0" [2745] cab use OH + 1'-0" [305]. For 10'-0" [3050] cab use OH + 2'-0" [610].



OVERHEAD GEARED TRACTION DESIGN GUIDE

Passenger, Front & Rear Opening, CWT at Side



NOTES:

1. Dimensions shown are based on standard sizes and capacities for typical building installations and should only be used for preliminary planning. Contact H-W for additional information before proceeding with construction or for assistance with existing or special conditions.
2. Dimensional data complies with the ASME A17.1 / CSA B44 Safety Code for Elevators and Escalators. State or local codes must be used if they differ from national code.
3. Interior cab dimensions may vary depending on the interior finishes. The platform and hoistway sizes should be increased accordingly for extra thick cab finishes.
4. Counterweight safeties are required if there is "occupied space" below the pit. Add 10" [254] to the hoistway and machine room widths listed for each elevator.

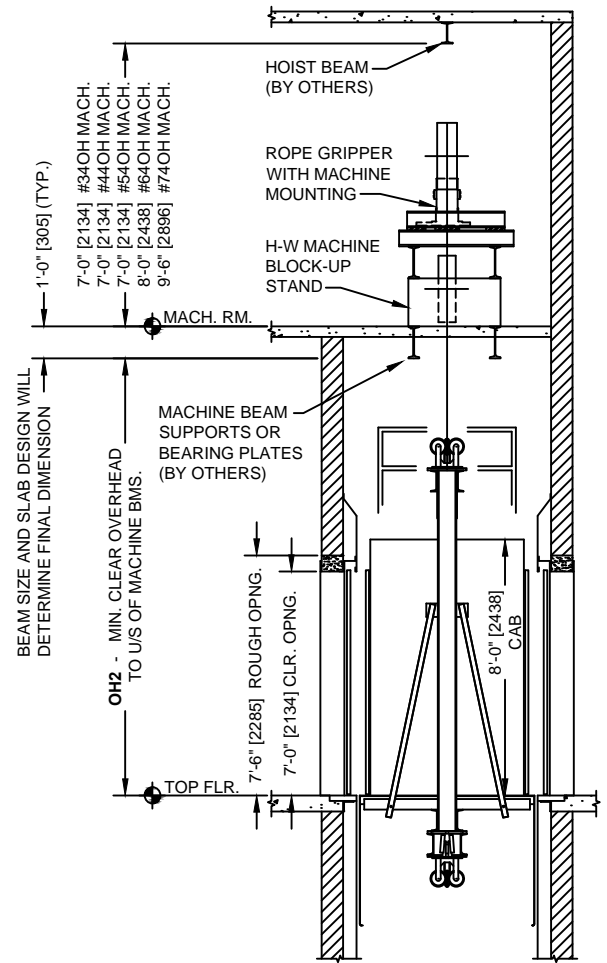
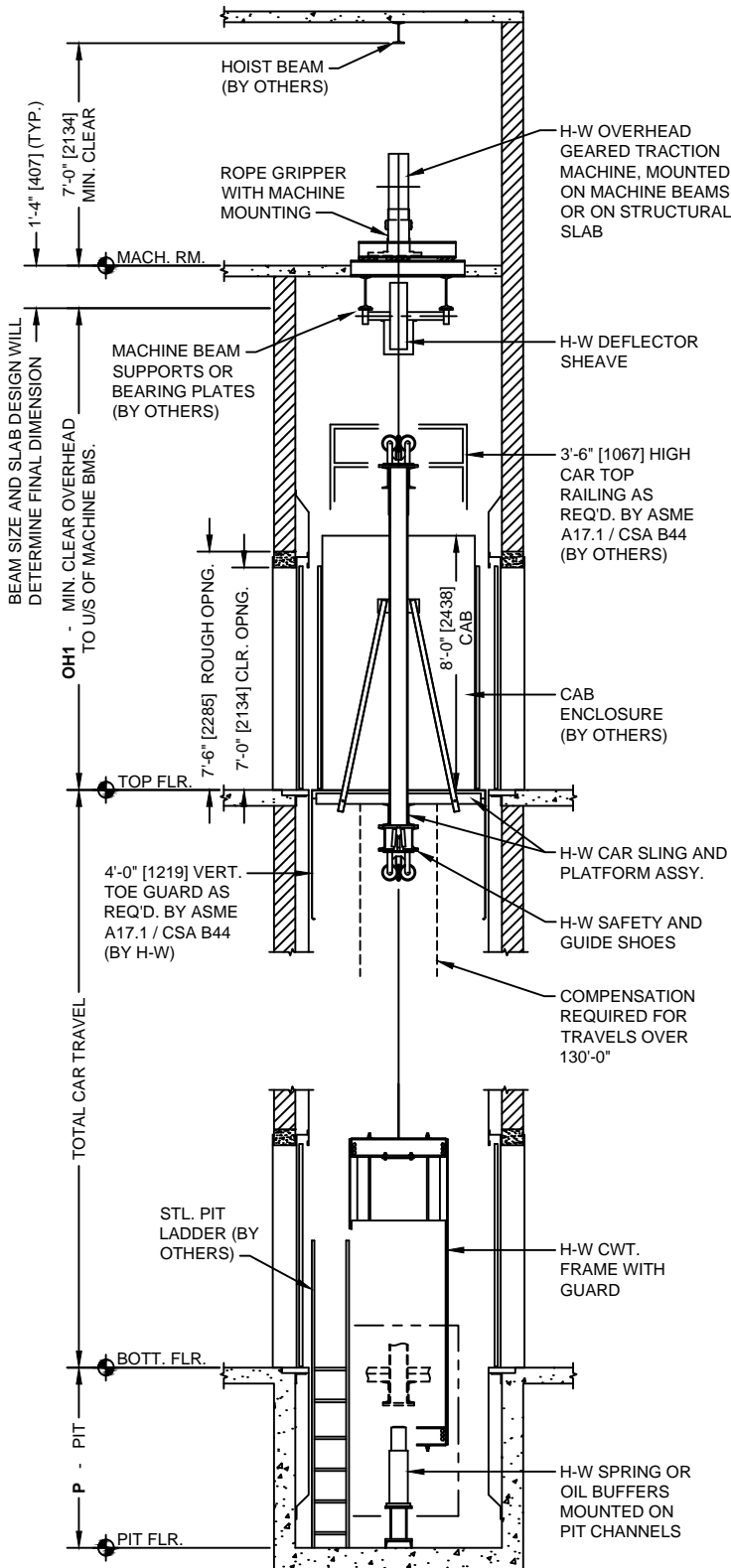
HOISTWAY AND MACHINE ROOM DIMENSIONS														
CAPACITY lb [kg]	INSIDE AREA (MAX. SF ALLOWED PER CODE)	H CLEAR OPENING WIDTH ft [mm]	OPENING TYPE (1)	MINIMUM CLEAR CAB INSIDE		PLATFORM SIZE		HOISTWAY SIZE (NON-SEISMIC)			HOISTWAY SIZE (SEISMIC ZONE 2 OR GREATER)			MACH. ROOM MD DEPTH ft [mm]
				A WIDTH ft [mm]	B DEPTH ft [mm]	C WIDTH ft [mm]	D DEPTH ft [mm]	E CLR. WIDTH ft [mm]	F CLR. DEPTH ft [mm]	G (DUPLEX) WALL TO WALL ft [mm]	E CLR. WIDTH ft [mm]	F CLR. DEPTH ft [mm]	G (DUPLEX) WALL TO WALL ft [mm]	
2,000 [900]	24.2 [2.25]	3'-0" [914]	SSSO (a)	5'-8" [1727]	4'-3" [1295]	6'-0" [1829]	5'-7 1/2" [1715]	8'-4" [2540]	6'-8" [2032]	17'-0" [5182]	8'-6" [2591]	6'-8" [2032]	17'-4" [5284]	14'-0" [4268]
2,500 [1160]	29.1 [2.70]	3'-6" [1067]	SSSO (b) SSCO (a)	6'-8" [2032]	4'-3" [1295]	7'-0" [2134]	5'-7 1/2" [1715]	9'-4" [2845]	6'-8" [2032]	19'-0" [5791]	9'-6" [2896]	6'-8" [2032]	19'-4" [5893]	14'-0" [4268]
3,000 [1380]	33.7 [3.13]	3'-6" [1067]	SSSO (b) SSCO (a)	6'-8" [2032]	4'-9" [1448]	7'-0" [2134]	6'-1 1/2" [1867]	9'-4" [2845]	7'-2" [2185]	19'-0" [5791]	9'-6" [2896]	7'-2" [2185]	19'-4" [5893]	14'-6" [4420]
3,500 [1600]	38.0 [3.53]	3'-6" [1067]	SSSO (c) SSCO (b)	6'-8" [2032]	5'-5" [1651]	7'-0" [2134]	6'-9 1/2" [2070]	9'-4" [2845]	7'-10" [2388]	19'-0" [5791]	9'-6" [2896]	7'-10" [2388]	19'-4" [5893]	15'-2" [4623]
4,000 [1815]	42.2 [3.92]	3'-6" [1067]	SSSO (c)	7'-8" [2337]	5'-5" [1651]	8'-0" [2438]	6'-9 1/2" [2070]	10'-4" [3150]	7'-10" [2388]	21'-0" [6401]	10'-6" [3201]	7'-10" [2388]	21'-4" [6503]	15'-2" [4623]
4,000 [1815]	42.2 [3.92]	4'-0" [1219]	SSCO (c)	7'-8" [2337]	5'-5" [1651]	8'-0" [2438]	6'-9 1/2" [2070]	10'-4" [3150]	7'-10" [2388]	21'-0" [6401]	10'-6" [3201]	7'-10" [2388]	21'-4" [6503]	15'-2" [4623]

a. These car dimensions and entrance types provide wheelchair accessibility.
b. These car dimensions and entrance types provide wheelchair accessibility and accommodate an ambulance type stretcher of (76"x24") in the horizontal position.
c. These car dimensions and entrance types provide wheelchair accessibility and accommodate an ambulance type stretcher of (84"x24") in the horizontal position as required by the IBC.



OVERHEAD GEARED TRACTION DESIGN GUIDE

Passenger, Front & Rear Opening, CWT at Side



HOISTWAY SECTION
(DEFLECTOR SHV. IN MACHINE ROOM)

HOISTWAY SECTION
(DEFLECTOR SHV. AT TOP OF HOISTWAY)

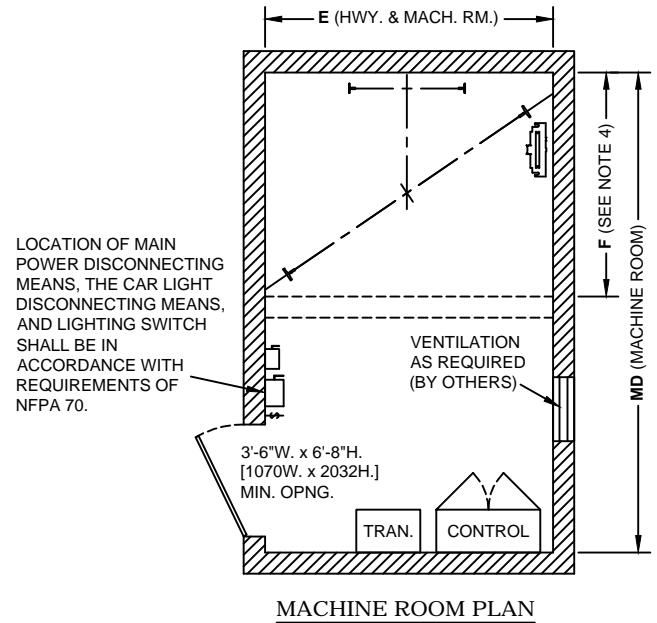
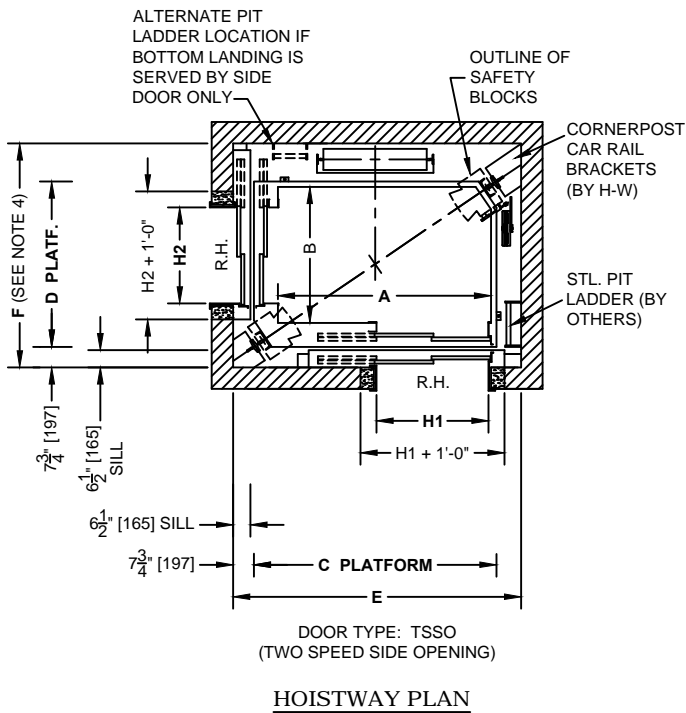
PIT AND OVERHEAD DIMENSIONS			
RATED SPEED fpm [m/s]	PIT DEPTH P	MIN. OVERHEAD CLEAR TO U/S BMS. (DEFLECTOR SHV. AT TOP OF HOISTWAY)	MIN. OVERHEAD CLEAR TO U/S BMS. (DEFLECTOR SHV. IN MACHINE ROOM)
		OH1	OH2
100 - 200 fpm [.50 - 1.00 m/s]	5'-6" [1676]	14'-11" [4547]	13'-5" [4089]
250 - 350 fpm [1.25 - 1.75m/s]	5'-8" [1727]	15'-6" [4724]	14'-0" [4267]
400 fpm [2.00 m/s]	6'-0" [1829]	15'-10" [4826]	14'-4" [4369]
450 fpm [2.25 m/s]	6'-8" [2032]	16'-5" [5004]	14'-11" [4547]
500 fpm [2.50 m/s]	6'-8" [2032]	16'-7" [5055]	15'-1" [4597]

Overhead dimensions (OH) are based on an 8'-0" [2438mm] cab height with a 7'-0" [2134mm] door. For 9'-0" [2745] cab use OH + 1'-0" [305]. For 10'-0" [3050] cab use OH + 2'-0" [610].



OVERHEAD GEARED TRACTION DESIGN GUIDE

Passenger, Front & Side Opening (Cornerpost), CWT at Rear



NOTES:

1. Dimensions shown are based on standard sizes and capacities for typical building installations and should only be used for preliminary planning. Contact H-W for additional information before proceeding with construction or for assistance with existing or special conditions.
2. Dimensional data complies with the ASME A17.1 / CSA B44 Safety Code for Elevators and Escalators. State or local codes must be used if they differ from national code.
3. Interior cab dimensions may vary depending on the interior finishes. The platform and hoistway sizes should be increased accordingly for extra thick cab finishes.
4. Counterweight safeties are required if there is "occupied space" below the pit. Add 8" [203] to the hoistway and machine room depths listed.
5. Larger car sizes may be possible up to a maximum of 5,000# capacity. Consult with H-W engineering department.

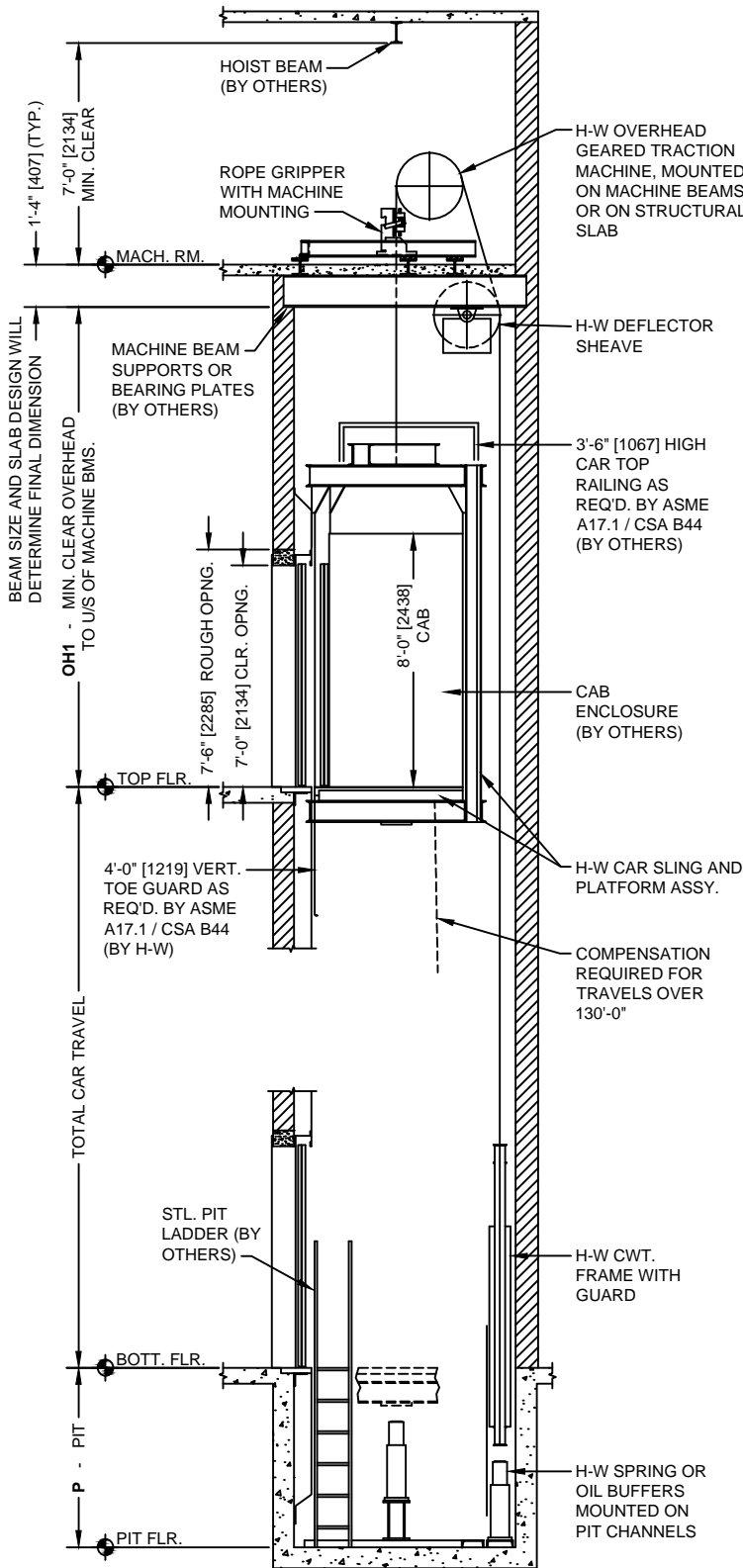
HOISTWAY AND MACHINE ROOM DIMENSIONS												
CAPACITY lb [kg]	INSIDE AREA (MAX. SF ALLOWED PER CODE)	H1 CLEAR OPENING WIDTH ft [mm]	OPENING TYPE (1)	H2 CLEAR OPENING WIDTH ft [mm]	OPENING TYPE (1)	MINIMUM CLEAR CAB INSIDE		PLATFORM SIZE		HOISTWAY SIZE (SEISMIC ZONE 0 - 4)		MACH. ROOM
						A WIDTH ft [mm]	B DEPTH ft [mm]	C WIDTH ft [mm]	D DEPTH ft [mm]	E CLR. WIDTH ft [mm]	F CLR. DEPTH ft [mm]	MD DEPTH ft [mm]
2,000 [900]	24.2 [2.25]	3'-0" [914]	TSSO (a)	3'-0" [914]	TSSO (a)	5'-8" [1727]	4'-3" [1295]	6'-7" [2007]	5'-2" [1575]	8'-0" [2438]	7'-0" [2134]	15'-0" [4572]
2,500 [1160]	29.1 [2.70]	3'-6" [1067]	TSSO (b)	3'-0" [914]	TSSO (b)	6'-8" [2032]	4'-3" [1295]	7'-7" [2311]	5'-2" [1575]	9'-0" [2743]	7'-0" [2134]	15'-0" [4572]
3,000 [1380]	33.7 [3.13]	3'-6" [1067]	TSSO (b)	3'-0" [914]	TSSO (b)	6'-8" [2032]	4'-9" [1448]	7'-7" [2311]	5'-8" [1727]	9'-0" [2743]	7'-6" [2286]	15'-6" [4724]
3,500 [1600]	38.0 [3.53]	3'-6" [1067]	TSSO (c)	3'-6" [1067]	TSSO (c)	6'-8" [2032]	5'-5" [1651]	7'-7" [2311]	6'-4" [1930]	9'-0" [2743]	8'-2" [2489]	16'-0" [4877]
4,000 [1815]	42.2 [3.92]	4'-0" [1219]	TSSO (c)	3'-6" [1067]	TSSO (c)	7'-8" [2337]	5'-5" [1651]	8'-7" [2616]	6'-4" [1930]	10'-0" [3048]	8'-2" [2489]	16'-0" [4877]

a. These car dimensions and entrance types provide wheelchair accessibility.
b. These car dimensions and entrance types provide wheelchair accessibility and accommodate an ambulance type stretcher of (76"x24") in the horizontal position.
c. These car dimensions and entrance types provide wheelchair accessibility and accommodate an ambulance type stretcher of (84"x24") in the horizontal position as required by the IBC.

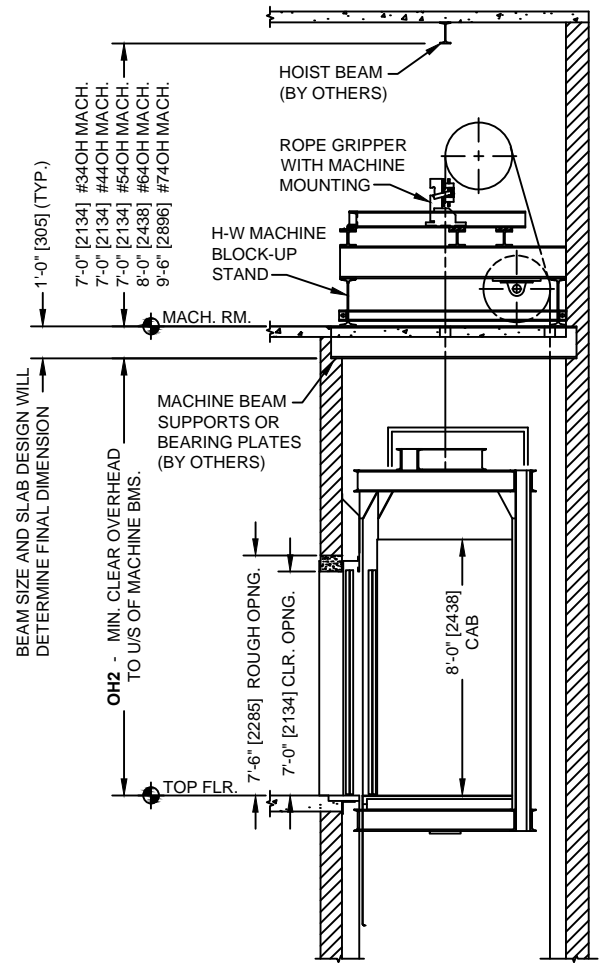


OVERHEAD GEARED TRACTION DESIGN GUIDE

Passenger, Front & Side Opening (Cornerpost), CWT at Rear



HOISTWAY SECTION (DEFLECTOR SHV. AT TOP OF HOISTWAY)



HOISTWAY SECTION (DEFLECTOR SHV. IN MACHINE ROOM)

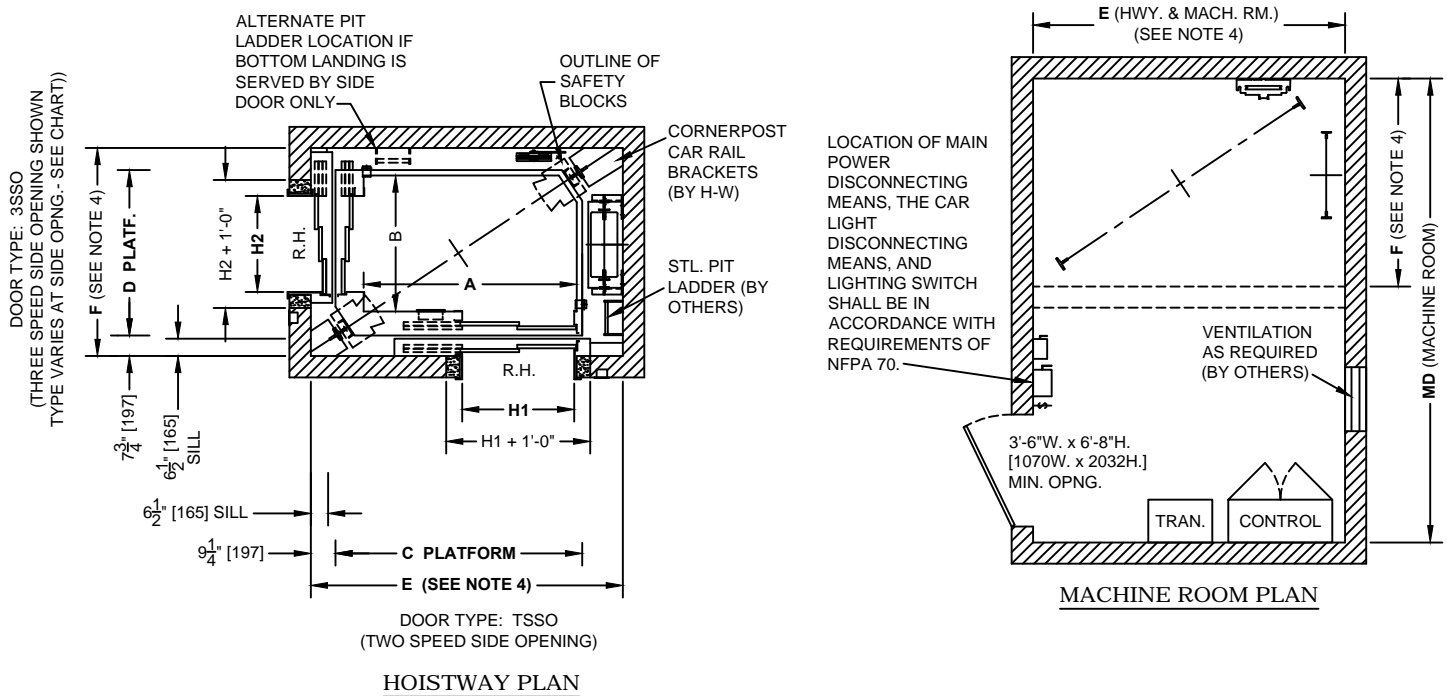
PIT AND OVERHEAD DIMENSIONS			
RATED SPEED fpm [m/s]	PIT DEPTH P	MIN. OVERHEAD CLEAR TO U/S BMS. (DEFLECTOR SHV. AT TOP OF HOISTWAY)	MIN. OVERHEAD CLEAR TO U/S BMS. (DEFLECTOR SHV. IN MACHINE ROOM)
		OH1	OH2
100 - 200 fpm [.50 - 1.00 m/s]	5'-6" [1676]	14'-9" [4496]	14'-3" [4343]
250 - 350 fpm [1.25 - 1.75 m/s]	5'-8" [1727]	15'-4" [4674]	14'-10" [4521]
400 fpm [2.00 m/s]	6'-0" [1829]	15'-8" [4775]	15'-2" [4623]
450 fpm [2.25 m/s]	6'-9" [2057]	16'-3" [4953]	15'-9" [4801]
500 fpm [2.50 m/s]	6'-9" [2057]	16'-5" [5004]	15'-11" [4851]

Overhead dimensions (OH) are based on an 8'-0" [2438mm] cab height with a 7'-0" [2134mm] door. For 9'-0" [2745] cab use OH + 1'-0" [305]. For 10'-0" [3050] cab use OH + 2'-0" [610].



OVERHEAD GEARED TRACTION DESIGN GUIDE

Passenger, Front & Side Opening (Cornerpost), CWT at Side



NOTES:

1. Dimensions shown are based on standard sizes and capacities for typical building installations and should only be used for preliminary planning. Contact H-W for additional information before proceeding with construction or for assistance with existing or special conditions.
2. Dimensional data complies with the ASME A17.1 / CSA B44 Safety Code for Elevators and Escalators. State or local codes must be used if they differ from national code.
3. Interior cab dimensions may vary depending on the interior finishes. The platform and hoistway sizes should be increased accordingly for extra thick cab finishes.
4. Counterweight safeties are required if there is "occupied space" below the pit. This arrangement may not provide enough space to accommodate a counterweight safety. Consult with H-W engineering department.
5. Larger car sizes may be possible up to a maximum of 5,000# capacity. Consult with H-W engineering department.

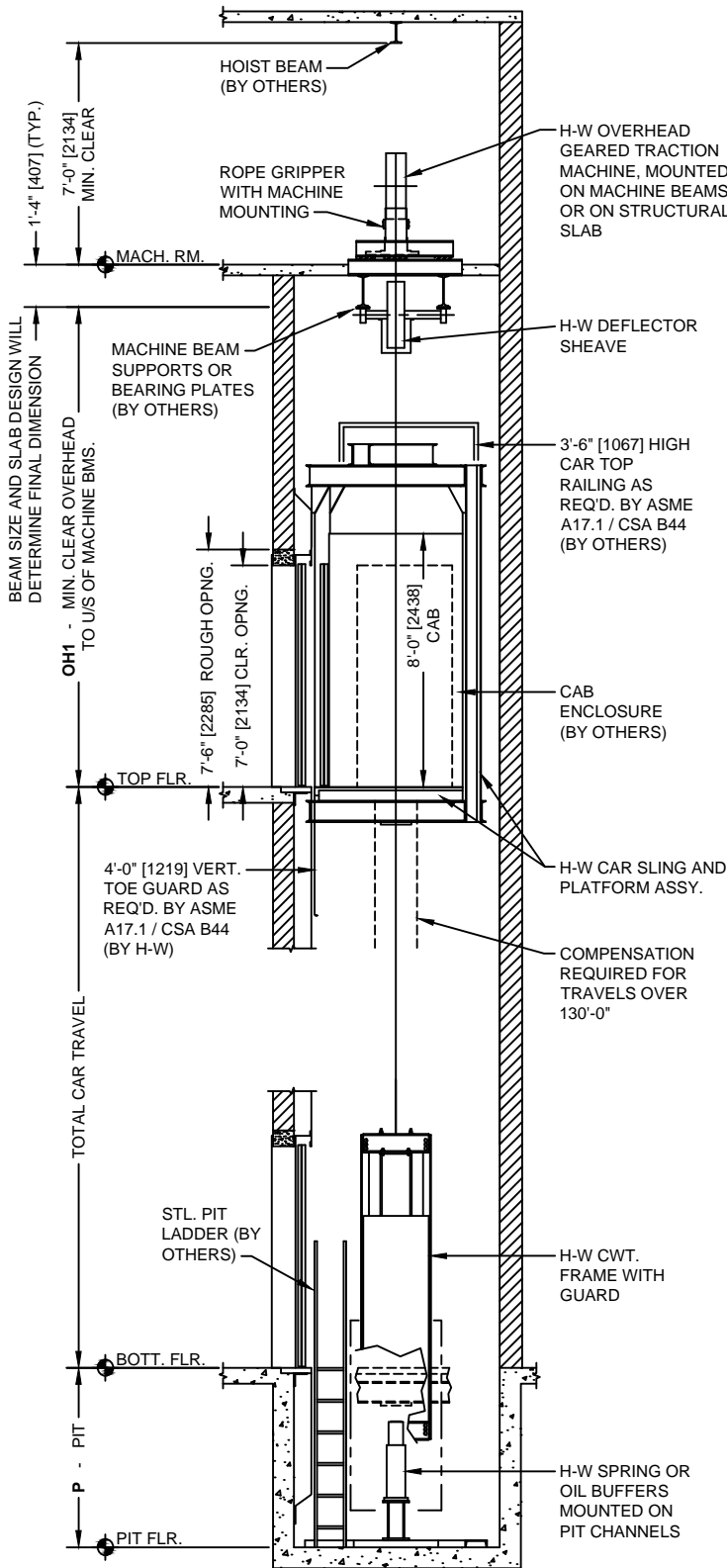
HOISTWAY AND MACHINE ROOM DIMENSIONS												
CAPACITY lb [kg]	INSIDE AREA (MAX. SF ALLOWED PER CODE)	H1 CLEAR OPENING WIDTH ft [mm]	OPENING TYPE (1)	H2 CLEAR OPENING WIDTH ft [mm]	OPENING TYPE (1)	MINIMUM CLEAR CAB INSIDE		PLATFORM SIZE		HOISTWAY SIZE (SEISMIC ZONE 0 - 4)		MACH. ROOM
						A WIDTH ft [mm]	B DEPTH ft [mm]	C WIDTH ft [mm]	D DEPTH ft [mm]	E CLR. WIDTH ft [mm]	F CLR. DEPTH ft [mm]	MD DEPTH ft [mm]
2,000 [900]	24.2 [2.25]	3'-0" [914]	TSSO (a)	3'-0" [914]	3SSO (a)	5'-8" [1727]	4'-3" [1295]	6'-8 1/2" [2045]	5'-2" [1575]	8'-9" [2667]	6'-6" [1981]	14'-6" [4420]
2,500 [1160]	29.1 [2.70]	3'-6" [1067]	TSSO (b)	3'-0" [914]	3SSO (b)	6'-8" [2032]	4'-3" [1295]	7'-8 1/2" [2350]	5'-2" [1575]	9'-9" [2972]	6'-6" [1981]	14'-6" [4420]
3,000 [1380]	33.7 [3.13]	3'-6" [1067]	TSSO (b)	3'-0" [914]	TSSO (b)	6'-8" [2032]	4'-9" [1448]	7'-7" [2311]	5'-8" [1727]	9'-6" [2896]	7'-0" [2134]	15'-0" [4572]
3,500 [1600]	38.0 [3.53]	3'-6" [1067]	TSSO (c)	3'-6" [1067]	TSSO (c)	6'-8" [2032]	5'-5" [1651]	7'-7" [2311]	6'-4" [1930]	9'-6" [2896]	7'-9" [2362]	15'-9" [4801]
4,000 [1815]	42.2 [3.92]	4'-0" [1219]	TSSO (c)	3'-6" [1067]	TSSO (c)	7'-8" [2337]	5'-5" [1651]	8'-7" [2616]	6'-4" [1930]	10'-6" [3200]	7'-9" [2362]	15'-9" [4801]

a. These car dimensions and entrance types provide wheelchair accessibility.
b. These car dimensions and entrance types provide wheelchair accessibility and accommodate an ambulance type stretcher of (76"x24") in the horizontal position.
c. These car dimensions and entrance types provide wheelchair accessibility and accommodate an ambulance type stretcher of (84"x24") in the horizontal position as required by the IBC.

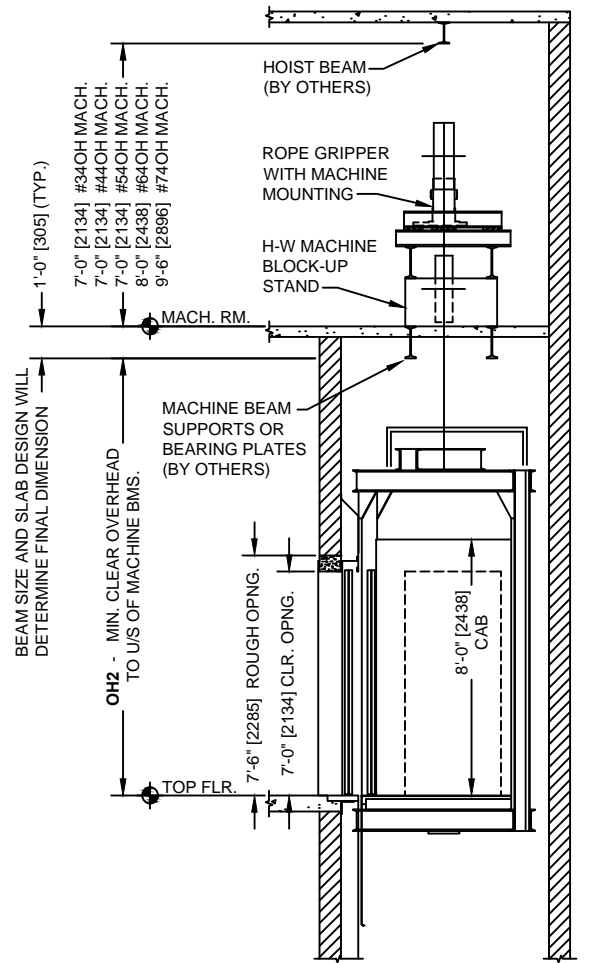


OVERHEAD GEARED TRACTION DESIGN GUIDE

Passenger, Front & Side Opening (Cornerpost), CWT at Side



HOISTWAY SECTION (DEFLECTOR SHV. AT TOP OF HOISTWAY)



HOISTWAY SECTION (DEFLECTOR SHV. IN MACHINE ROOM)

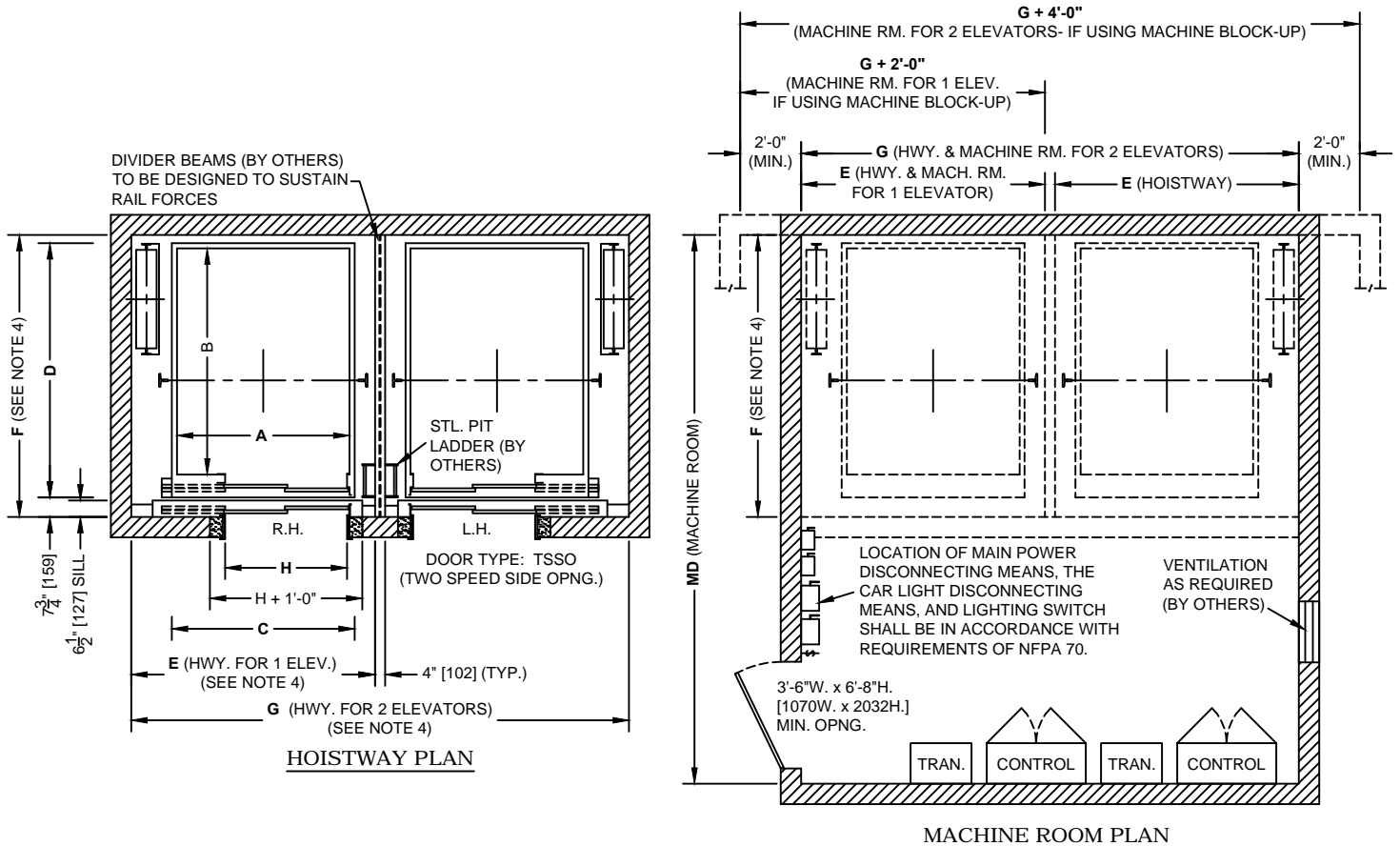
PIT AND OVERHEAD DIMENSIONS			
RATED SPEED fpm [m/s]	PIT DEPTH	MIN. OVERHEAD CLEAR TO U/S BMS. (DEFLECTOR SHV. AT TOP OF HOISTWAY)	MIN. OVERHEAD CLEAR TO U/S BMS. (DEFLECTOR SHV. IN MACHINE ROOM)
		OH1	OH2
100 - 200 fpm [.50 - 1.00 m/s]	5'-6" [1676]	14'-9" [4496]	14'-3" [4343]
250 - 350 fpm [1.25 - 1.75m/s]	5'-8" [1727]	15'-4" [4674]	14'-10" [4521]
400 fpm [2.00 m/s]	6'-0" [1829]	15'-8" [4775]	15'-2" [4623]
450 fpm [2.25 m/s]	6'-9" [2057]	16'-3" [4953]	15'-9" [4801]
500 fpm [2.50 m/s]	6'-9" [2057]	16'-5" [5004]	15'-11" [4851]

Overhead dimensions (OH) are based on an 8'-0" [2438mm] cab height with a 7'-0" [2134mm] door. For 9'-0" [2745] cab use OH + 1'-0" [305]. For 10'-0" [3050] cab use OH + 2'-0" [610].



OVERHEAD GEARED TRACTION DESIGN GUIDE

Hospital / Service, Front Opening, CWT at Side



NOTES:

1. Dimensions shown are based on standard sizes and capacities for typical building installations and should only be used for preliminary planning. Contact H-W for additional information before proceeding with construction or for assistance with existing or special conditions.
2. Dimensional data complies with the ASME A17.1 / CSA B44 Safety Code for Elevators and Escalators. State or local codes must be used if they differ from national code.
3. Interior cab dimensions may vary depending on the interior finishes. The platform and hoistway sizes should be increased accordingly for extra thick cab finishes.
4. Counterweight safeties are required if there is "occupied space" below the pit. Add 8" [203] to the hoistway and machine room widths listed and 6" [152] to the hoistway and machine room depths listed for each elevator.

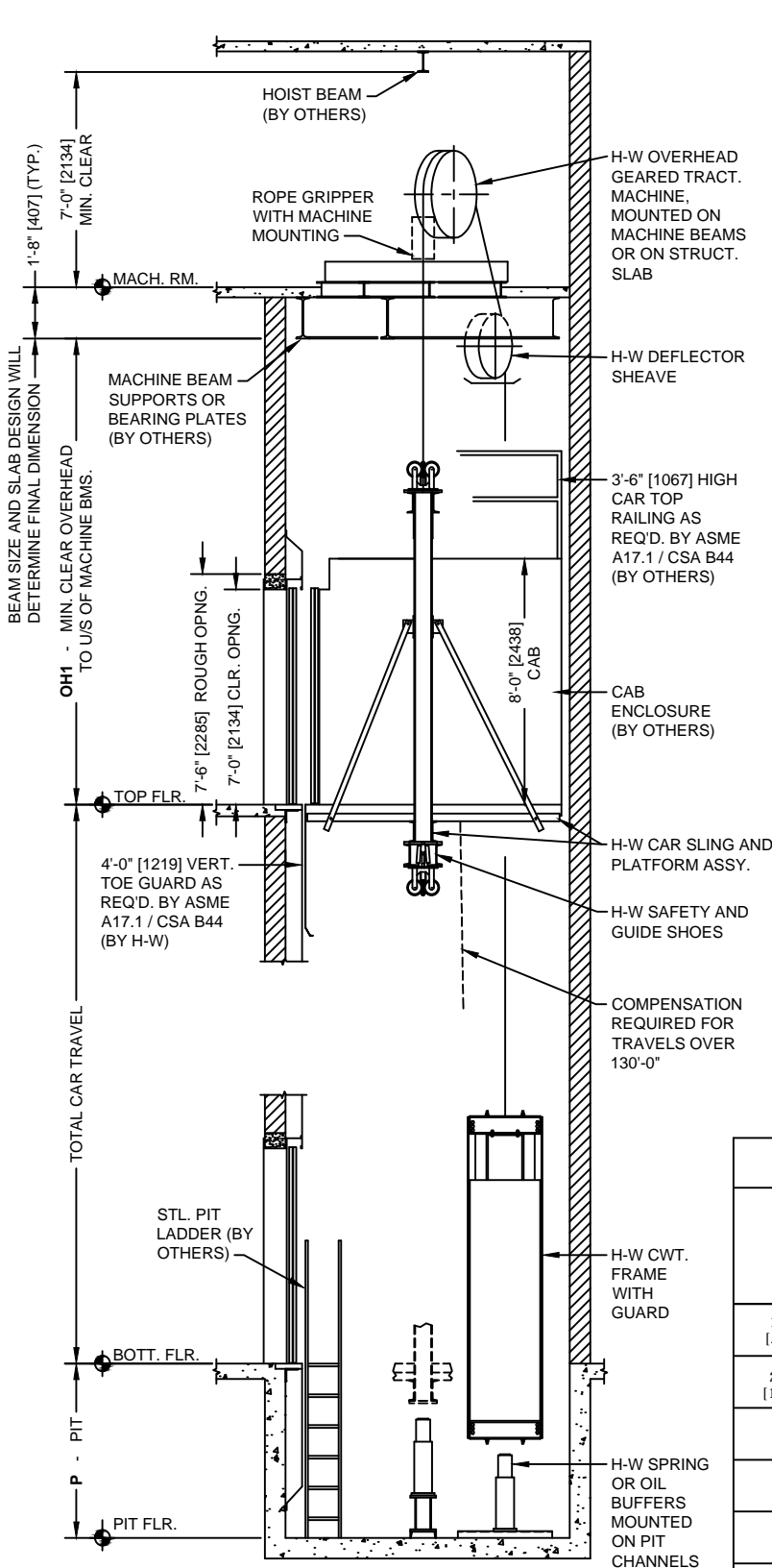
HOISTWAY AND MACHINE ROOM DIMENSIONS															
CAPACITY lb [kg]	INSIDE AREA (MAX. SF ALLOWED PER CODE)	H CLEAR OPENING WIDTH ft [mm]	OPENING TYPE (1)	MINIMUM CLEAR CAB INSIDE		PLATFORM SIZE		HOISTWAY SIZE (NON-SEISMIC)			HOISTWAY SIZE (SEISMIC ZONE 2 OR GREATER)			MACH. ROOM	
				A WIDTH ft [mm]	B DEPTH ft [mm]	C WIDTH ft [mm]	D DEPTH ft [mm]	E CLR. WIDTH ft [mm]	F CLR. DEPTH ft [mm]	G (DUPLEX) WALL TO WALL ft [mm]	E CLR. WIDTH ft [mm]	F CLR. DEPTH ft [mm]	G (DUPLEX) WALL TO WALL ft [mm]	MD DEPTH ft [mm]	
3,500 [1600]	38.0 [3.53]	3'-10" [1169]	TSSO (a)	5'-2" [1575]	7'-4" [2235]	5'-6" [1677]	8'-4" [2540]	7'-8" [2337]	9'-3" [2820]	15'-8" [4775]	8'-0" [2438]	9'-3" [2820]	16'-4" [4978]	17'-0" [5182]	
4,000 [1815]	42.2 [3.92]	4'-0" [1219]	TSSO (a)	5'-8" [1727]	7'-4" [2235]	6'-0" [1829]	8'-4" [2540]	8'-2" [2489]	9'-3" [2820]	16'-8" [5080]	8'-6" [2642]	9'-3" [2820]	17'-4" [5283]	17'-0" [5182]	
4,500 [2040]	46.2 [4.29]	4'-0" [1219]	TSSO (a)	5'-8" [1727]	7'-10" [2388]	6'-0" [1829]	8'-10" [2693]	8'-4" [2540]	9'-9" [2972]	17'-0" [5182]	8'-6" [2642]	9'-9" [2972]	17'-4" [5283]	17'-6" [5334]	
5,000 [2270]	50.0 [4.65]	4'-0" [1219]	TSSO (a)	5'-8" [1727]	8'-6" [2591]	6'-0" [1829]	9'-6" [2896]	8'-4" [2540]	10'-5" [3175]	17'-0" [5182]	8'-6" [2642]	10'-5" [3175]	17'-4" [5283]	18'-3" [5563]	

a. These car dimensions and entrance types provide wheelchair accessibility and accommodate an ambulance type stretcher of (84"x24") in the horizontal position as required by the IBC.

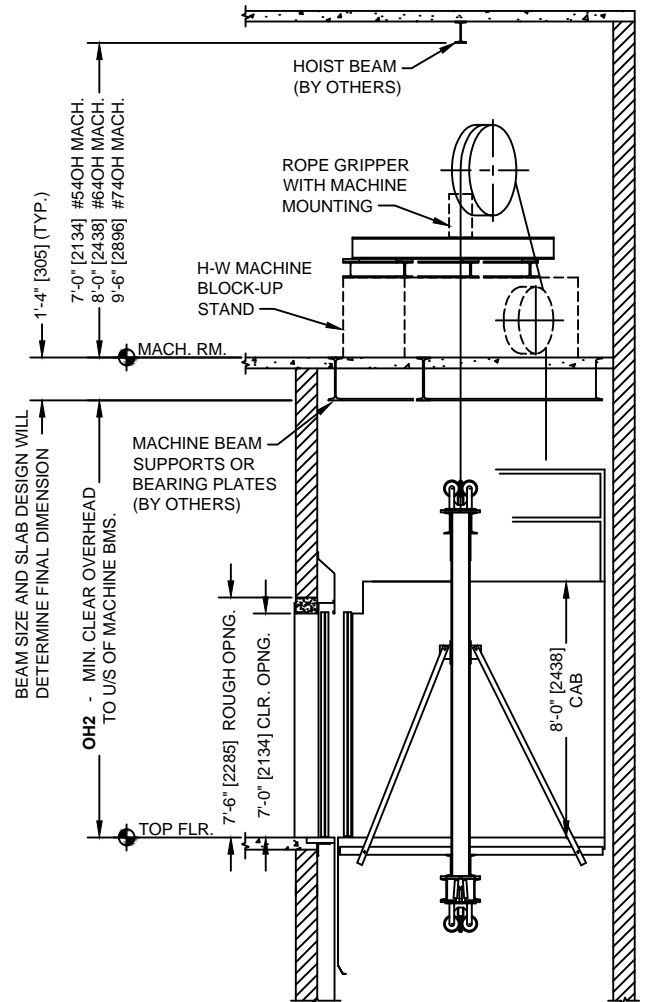


OVERHEAD GEARED TRACTION DESIGN GUIDE

Hospital / Service, Front Opening, CWT at Side



HOISTWAY SECTION
(DEFLECTOR SHV. AT TOP OF HOISTWAY)



HOISTWAY SECTION
(DEFLECTOR SHV. IN MACHINE ROOM)

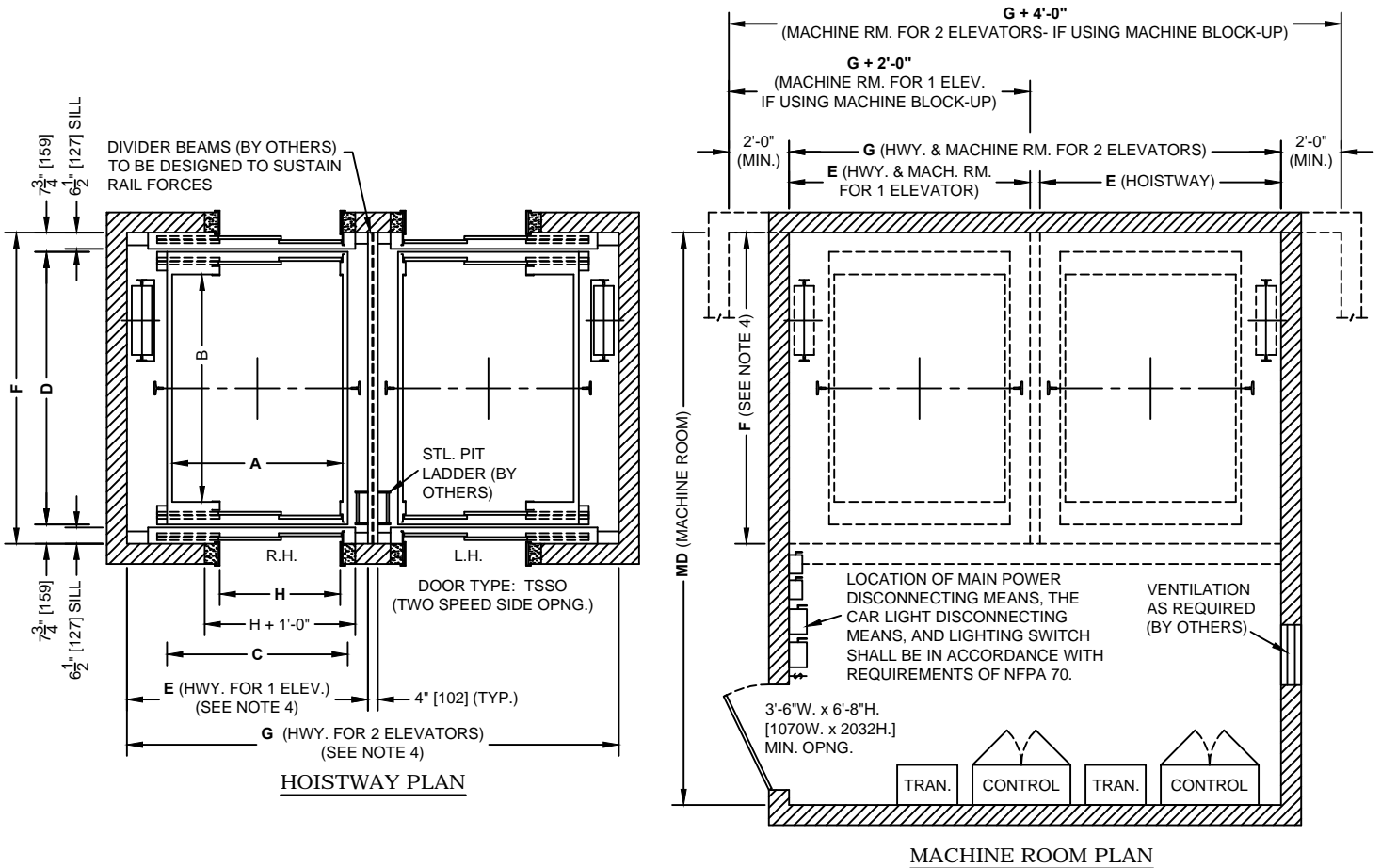
PIT AND OVERHEAD DIMENSIONS			
RATED SPEED fpm [m/s]	PIT DEPTH P	MIN. OVERHEAD CLEAR TO U/S BMS. (DEFLECTOR SHV. AT TOP OF HOISTWAY)	MIN. OVERHEAD CLEAR TO U/S BMS. (DEFLECTOR SHV. IN MACHINE ROOM)
		OH1	OH2
100 - 200 fpm [.50 - 1.00 m/s]	5'-6" [1677]	14'-7" [4445]	13'-5" [4089]
250 - 350 fpm [1.25 - 1.75m/s]	6'-0" [1829]	15'-2" [4623]	14'-0" [4267]
400 fpm [2.00 m/s]	6'-3" [1905]	15'-6" [4725]	14'-4" [4369]
450 fpm [2.25 m/s]	6'-10" [2083]	16'-1" [4902]	14'-11" [4547]
500 fpm [2.50 m/s]	6'-10" [2083]	16'-3" [4953]	15'-1" [4597]

Overhead dimensions (OH) are based on an 8'-0" [2438mm] cab height with a 7'-0" [2134mm] door. For 9'-0" [2745] cab use OH + 1'-0" [305]. For 10'-0" [3050] cab use OH + 2'-0" [610].



OVERHEAD GEARED TRACTION DESIGN GUIDE

Hospital / Service, Front & Rear Opening, CWT at Side



NOTES:

1. Dimensions shown are based on standard sizes and capacities for typical building installations and should only be used for preliminary planning. Contact H-W for additional information before proceeding with construction or for assistance with existing or special conditions.
2. Dimensional data complies with the ASME A17.1 / CSA B44 Safety Code for Elevators and Escalators. State or local codes must be used if they differ from national code.
3. Interior cab dimensions may vary depending on the interior finishes. The platform and hoistway sizes should be increased accordingly for extra thick cab finishes.
4. Counterweight safeties are required if there is "occupied space" below the pit. Add 8" [203] to the hoistway and machine room widths listed for each elevator.

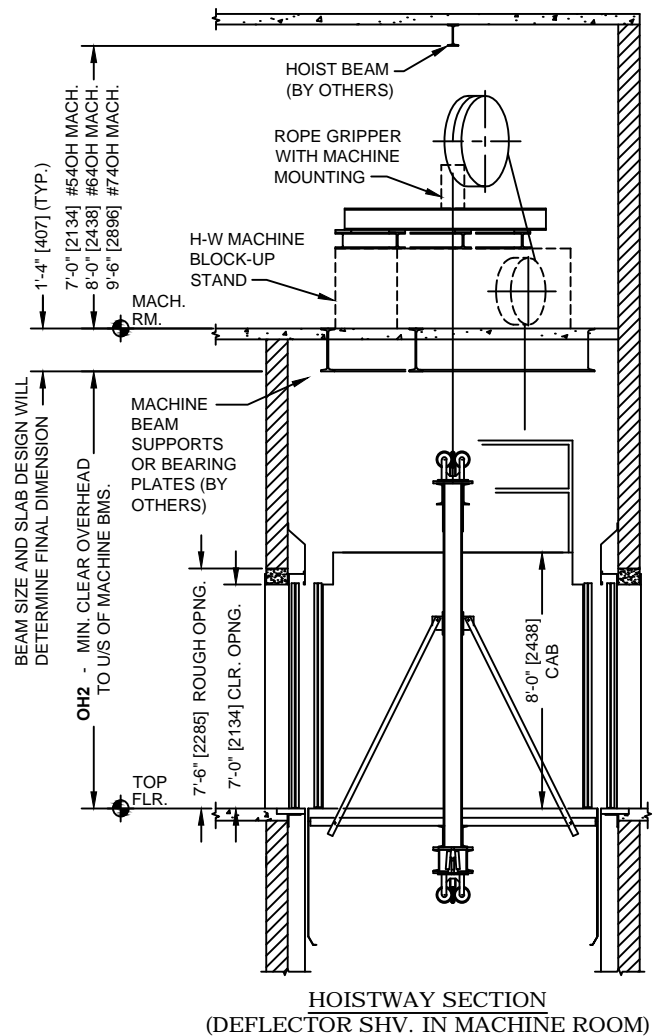
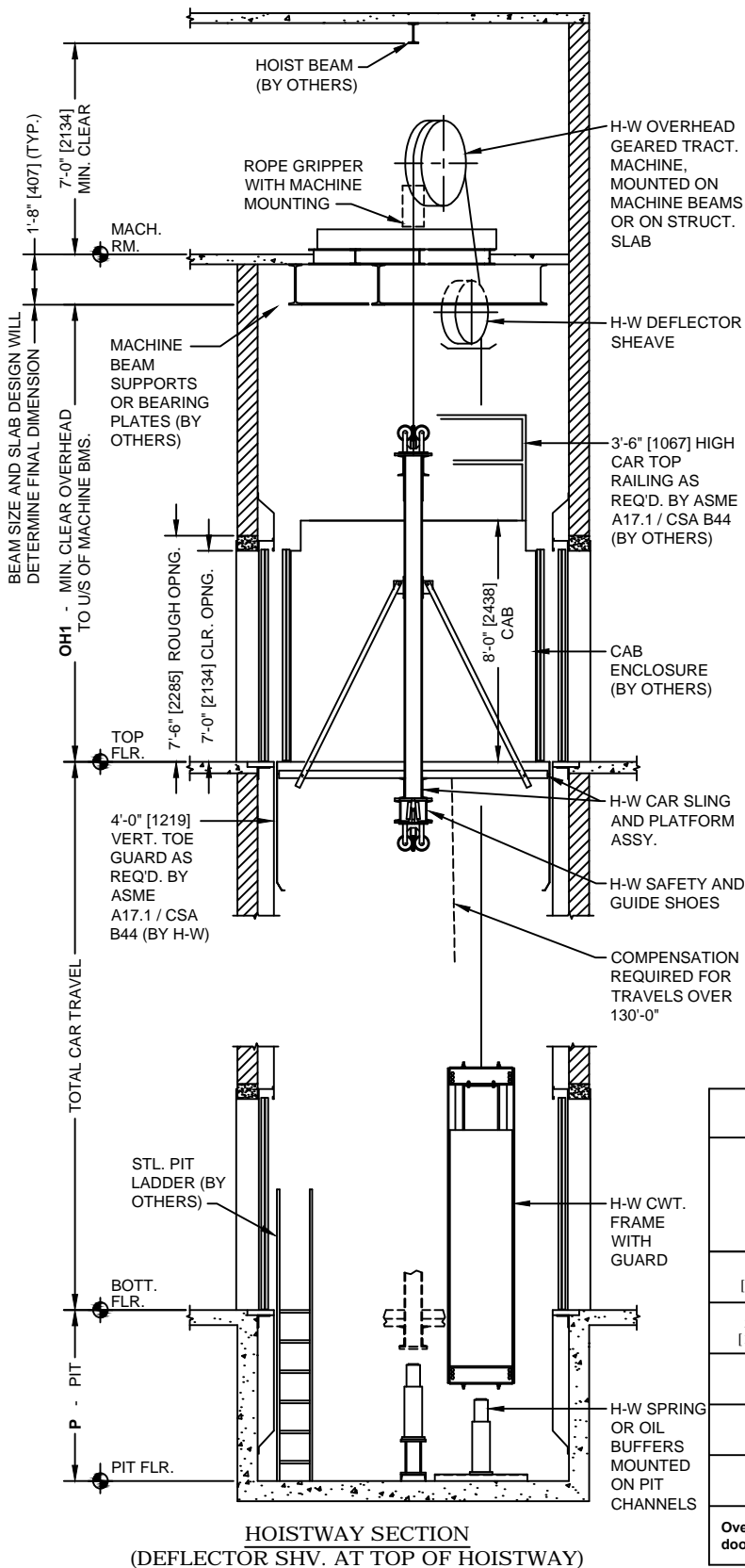
HOISTWAY AND MACHINE ROOM DIMENSIONS															
CAPACITY lb [kg]	INSIDE AREA (MAX. SF ALLOWED PER CODE)	H CLEAR OPENING WIDTH ft [mm]	OPENING TYPE (1)	MINIMUM CLEAR CAB INSIDE		PLATFORM SIZE		HOISTWAY SIZE (NON-SEISMIC)			HOISTWAY SIZE (SEISMIC ZONE 2 OR GREATER)			MACH. ROOM	
				A WIDTH ft [mm]	B DEPTH ft [mm]	C WIDTH ft [mm]	D DEPTH ft [mm]	E CLR. WIDTH ft [mm]	F CLR. DEPTH ft [mm]	G (DUPLEX) WALL TO WALL ft [mm]	E CLR. WIDTH ft [mm]	F CLR. DEPTH ft [mm]	G (DUPLEX) WALL TO WALL ft [mm]	MD DEPTH ft [mm]	
3,500 [1600]	38.0 [3.53]	3'-10" [1169]	TSSO (a)	5'-2" [1575]	7'-4" [2235]	5'-6" [1677]	9'-0 1/2" [2756]	7'-10" [2388]	10'-4" [3150]	16'-0" [4877]	8'-0" [2438]	10'-4" [3150]	16'-4" [4978]	18'-0" [5486]	
4,000 [1815]	42.2 [3.92]	4'-0" [1219]	TSSO (a)	5'-8" [1727]	7'-4" [2235]	6'-0" [1829]	9'-0 1/2" [2756]	8'-4" [2540]	10'-4" [3150]	17'-0" [5182]	8'-6" [2642]	10'-4" [3150]	17'-4" [5283]	18'-0" [5486]	
4,500 [2040]	46.2 [4.29]	4'-0" [1219]	TSSO (a)	5'-8" [1727]	7'-10" [2388]	6'-0" [1829]	9'-6 1/2" [2908]	8'-4" [2540]	10'-10" [3302]	17'-0" [5182]	8'-6" [2642]	10'-10" [3302]	17'-4" [5283]	18'-0" [5486]	
5,000 [2270]	50.0 [4.65]	4'-0" [1219]	TSSO (a)	5'-8" [1727]	8'-6" [2591]	6'-0" [1829]	10'-2 1/2" [3112]	8'-4" [2540]	11'-6" [3505]	17'-0" [5182]	8'-6" [2642]	11'-6" [3505]	17'-4" [5283]	18'-8" [5690]	

a. These car dimensions and entrance types provide wheelchair accessibility and accommodate an ambulance type stretcher of (84"x24") in the horizontal position as required by the IBC.



OVERHEAD GEARED TRACTION DESIGN GUIDE

Hospital / Service, Front & Rear Opening, CWT at Side



HOISTWAY SECTION
(DEFLECTOR SHV. IN MACHINE ROOM)

PIT AND OVERHEAD DIMENSIONS			
RATED SPEED fpm [m/s]	PIT DEPTH P	MIN. OVERHEAD CLEAR TO U/S BMS. (DEFLECTOR SHV. AT TOP OF HOISTWAY)	MIN. OVERHEAD CLEAR TO U/S BMS. (DEFLECTOR SHV. IN MACHINE ROOM)
		OH1	OH2
100 - 200 fpm [.50 - 1.00 m/s]	5'-6" [1677]	14'-7" [4445]	13'-5" [4089]
250 - 350 fpm [1.25 - 1.75 m/s]	6'-0" [1829]	15'-2" [4623]	14'-0" [4267]
400 fpm [2.00 m/s]	6'-3" [1905]	15'-6" [4725]	14'-4" [4369]
450 fpm [2.25 m/s]	6'-10" [2083]	16'-1" [4902]	14'-11" [4547]
500 fpm [2.50 m/s]	6'-10" [2083]	16'-3" [4953]	15'-1" [4597]

Overhead dimensions (OH) are based on an 8'-0" [2438mm] cab height with a 7'-0" [2134mm] door. For 9'-0" [2745] cab use OH + 1'-0" [305]. For 10'-0" [3050] cab use OH + 2'-0" [610].