

A

B

C

D

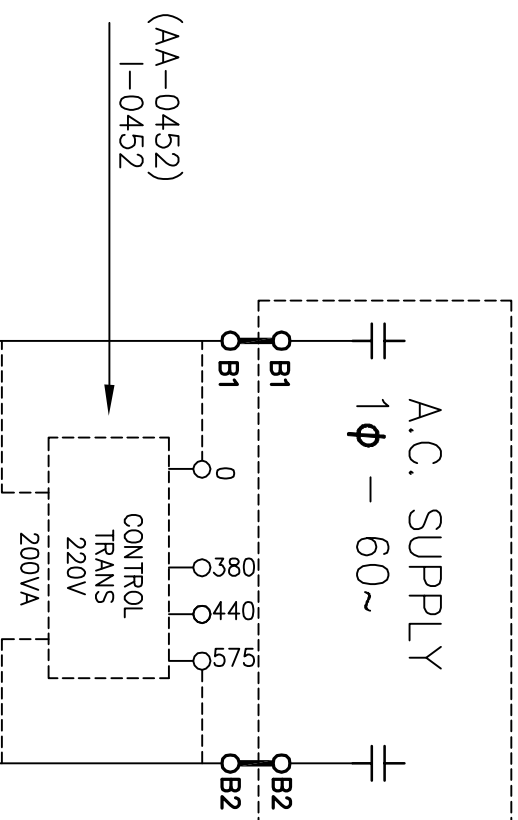
E

F

G

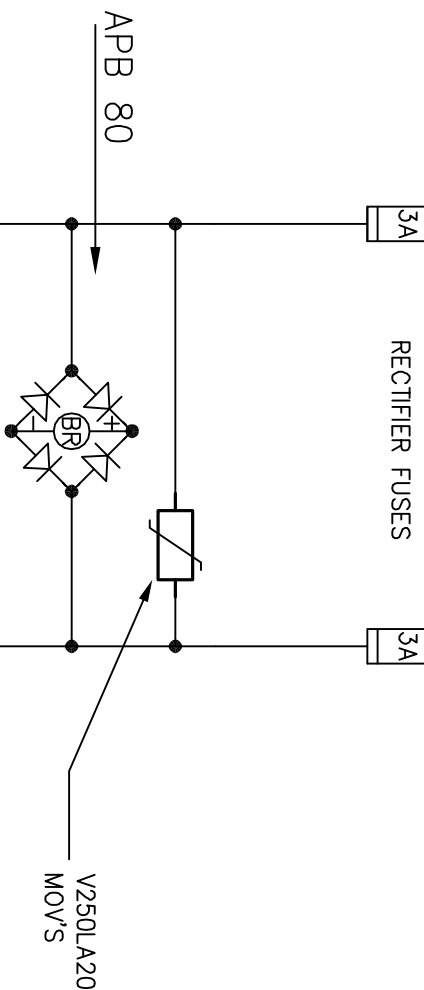
H

11

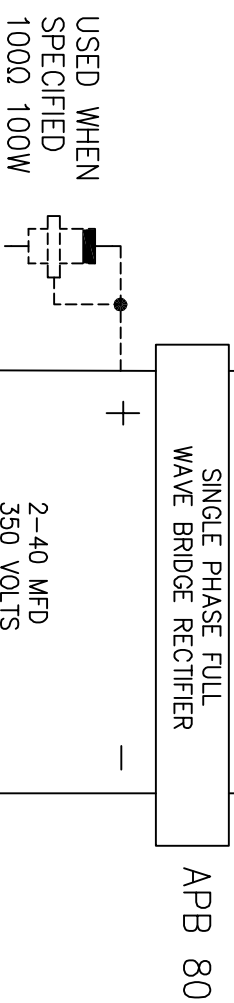


IF SUPPLY IS 380/440/575 CONNECT AS PER DOTTED LINES OMITTING SOLID LINES BETWEEN B1-B2 AND FUSES.

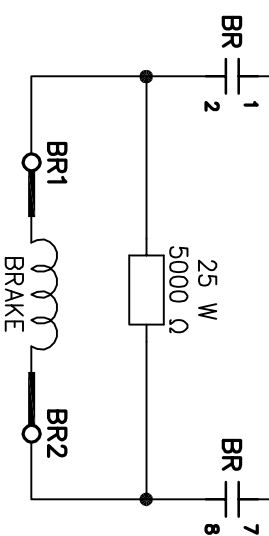
12



13



14



15

PART NUMBER WITH CONTROL TRANSFORMER: S-10019-T

NOTE:  
CONTACTS & TERMINAL INSIDE DOTTED LINE ARE ON EXISTING A.C. CONTROLLER. BOTH SUPPLY LINES SHOULD BE OPENED AS INDICATED.

REVISED 5/21/75:

"BR" RELAY WITH COIL 5693 REPLACED WITH FABRICATED RELAY USING COIL S6438-23000T 39W AND RELAY RECTIFIER KBH 2506

REVISED 11/15/66:

ADDED OPTIONAL COOLING RESISTOR

REVISED 4/11/66"

ADDED CONDENSER

REVISED 2-17-65:

RETRACED AND ADDED CONTROL TRANSFORMER AS OPTIONAL DEVICE.

REV	DESCRIPTION	DATE	HDT	<p><b>G.A.L. MANUFACTURING CORP.</b> 50 E. 153rd STREET BRONX, N.Y. 10451</p>	<p>WIRING DIAGRAM FOR REPLACING A.C. BRAKE WITH HOLLISTER WHITNEY D.C. BRAKE</p>	DRAWN BY: E. YANEZ	DATE: 8/11/2017
						ENGINEER: E. YANEZ	SHEET 3 OF 11
						SCALE	SIZE 11" X 17"
						PART No.	DOCUMENT No. S-10019
						REV	1