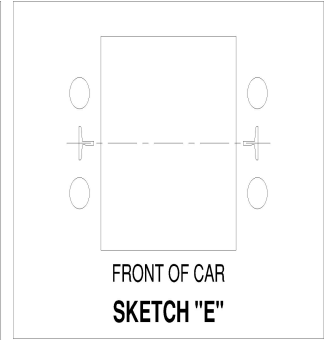
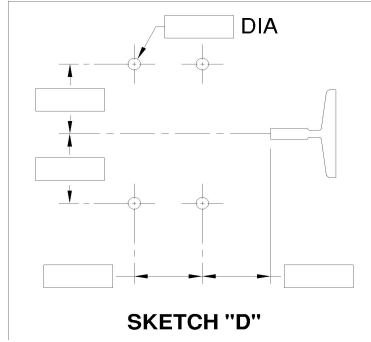
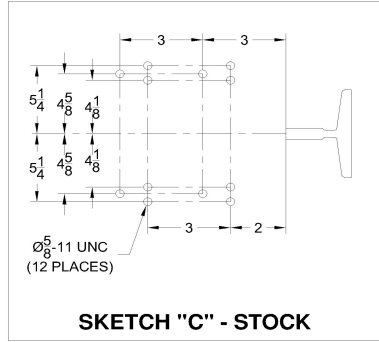
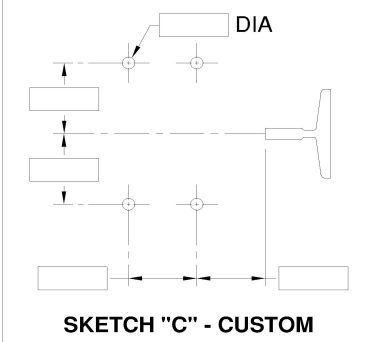
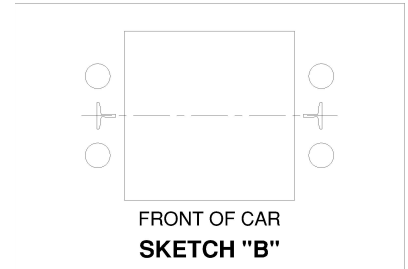
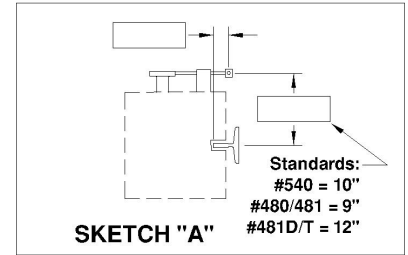


Company:
 Contact Name:
 Contact email:

Job Name:
 HW Contract Number:
 Elevator Number:
 HW Contact Name:

Safety Type:
 Car Speed (FPM):
 Capacity (lbs):
 Empty Car Weight (lbs):
 Compensation Weight (lbs - if applicable):
 Rail Size (in lbs/ft):
 Face to Face of Guide Rails (DBG in inches):
 Switch Type:
 Location of Safety Pick-up Arm: Fill in dimensions noted in sketch "A"
 Distance from Bottom of Crosshead to Top of Safety (inches):
 Governor and Safety Arm Location: Select on sketch "B"
 Safety Top Drilling:
 Guide Shoe Information:
 Notch Safety Corners:



	480 Safety	480 Safety	481 Safety	481 Safety	481D Safety	481D Safety	481T Safety	540 Safety
Max. Gross Load (lbs)	15000#	13000#	20000#	18000#	40000#	30000#	50000#	20000#
Car Speed (FPM)	0-500	501-800	0-500	501-800	0-350	351-500	0-400	0-150
Max.Governor Trip Speed (FPM)	625	970	625	970	452	625	510	210
Rail Sizes (lbs/ft)	11, 12, 15, 18.5, 22.5, 30	11, 12, 15, 18.5, 22.5, 30	11, 12, 15, 18.5, 22.5, 30	11, 12, 15, 18.5, 22.5, 30	18.5, 22.5, 30	18.5, 22.5, 30	30	8, 11, 12, 15, 18.5, 22.5
California Approval Exceptions	Dry rails only	Dry rails only	15, 18.5, 22.5, 30 dry rails only	15, 18.5, 22.5, 30 dry rails only	Dry rails only	Dry rails only	Dry rails only	Dry rails only
Pennsylvania Approval Exceptions	none	none	18.5, 22.5, 30 rails only	Not Approved	none	none	none	Max speed 100 FPM with Max trip speed of 175 FPM
Wisconsin Approval Exceptions	none	Not Approved	none	Not Approved	none	Not Approved	none	15000# Maximum Gross Load

For Internal HW use only	Refresh Form	Traveling Cable Weight	Safety Spring Pressure	Safety Spring Part Number