

REPLACEMENT SHEAVES

FILL IN ALL ITEMS ASSOCIATED WITH THE APPLICATION

ENGINEERING CONTACT: _____

JOB NAME: _____

COMPANY: _____

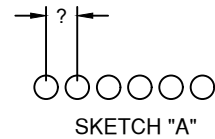
ELEV. #: _____ H-W #: _____

EMAIL: _____

DATE: _____

GENERAL INFORMATION

- CAR SPEED: _____
- CAPACITY: _____
- EMPTY CAR WEIGHT: _____
- HOIST ROPES: QUANTITY _____
- HOIST ROPES: SIZE _____
- ROPE PITCH (SEE SKETCH "A"): _____
- MACHINE LOCATION: OVERHEAD BASEMENT
- ROPING: 1:1 2:1
- SHEAVE LOCATION:

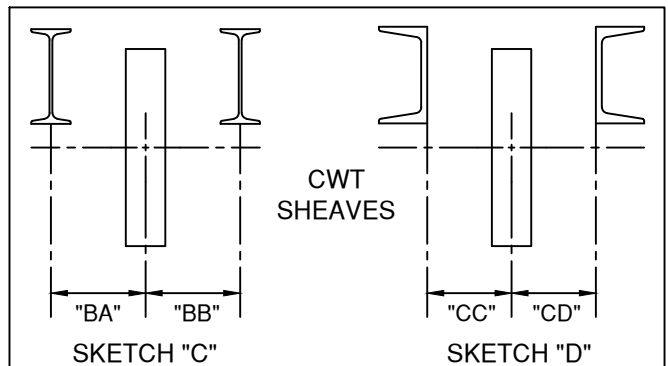
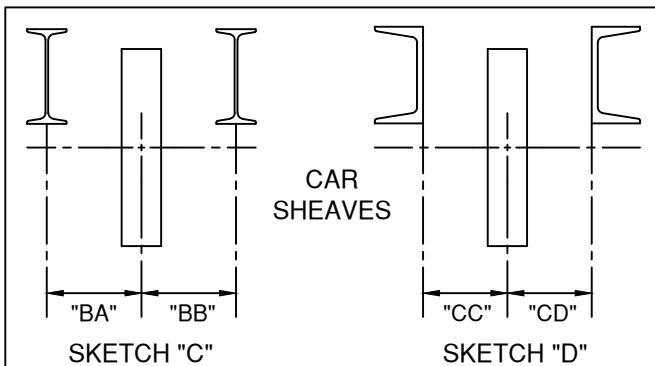


- OVERHEAD CAR
 - DIAMETER: _____ QUANTITY: _____
 - BEAM SIZE: _____ " HIGH x _____ " WIDE
 - BEAM SPACING "BA" _____ "BB" _____
 - CHANNEL SIZE: _____ " HIGH x _____ " WIDE
 - CHANNEL SPACING "CC" _____ "CD" _____

- OVERHEAD CWT
 - DIAMETER: _____ QUANTITY: _____
 - BEAM SIZE: _____ " HIGH x _____ " WIDE
 - BEAM SPACING "BA" _____ "BB" _____
 - CHANNEL SIZE: _____ " HIGH x _____ " WIDE
 - CHANNEL SPACING "CC" _____ "CD" _____

- ATTACHED TO CAR
 - DIAMETER: _____ QUANTITY: _____
 - BEAM SIZE: _____ " HIGH x _____ " WIDE
 - BEAM SPACING "BA" _____ "BB" _____
 - CHANNEL SIZE: _____ " HIGH x _____ " WIDE
 - CHANNEL SPACING "CC" _____ "CD" _____

- ATTACHED TO CWT
 - DIAMETER: _____ QUANTITY: _____
 - BEAM SIZE: _____ " HIGH x _____ " WIDE
 - BEAM SPACING "BA" _____ "BB" _____
 - CHANNEL SIZE: _____ " HIGH x _____ " WIDE
 - CHANNEL SPACING "CC" _____ "CD" _____



HANGING SHEAVES

FILL IN ALL ITEMS ASSOCIATED WITH THE APPLICATION

ENGINEERING CONTACT: _____

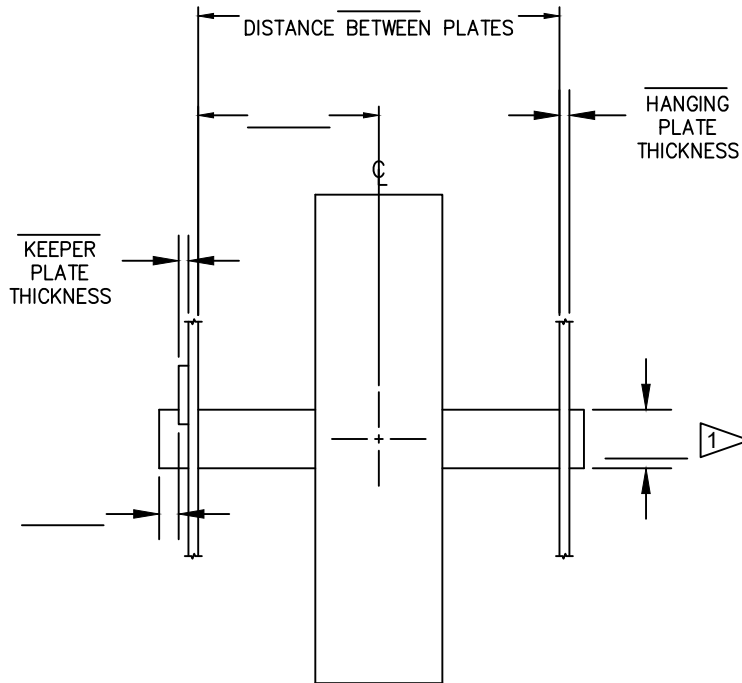
JOB NAME: _____

COMPANY: _____

ELEV. #: _____ H-W #: _____

EMAIL: _____

DATE: _____



PROVIDE OPEN DIMENSIONS ABOVE

1 HW TYPICAL SHAFT DIAMETER FOR HEAVY DUTY DEFLECTOR, CAR, CWT, AND OVERHEAD SHEAVES IS 3.438" - 3.440. IF YOU REQUIRE A SMALLER DIAMETER FOR YOUR EXISTING CONDITIONS, PROVIDE YOUR SHAFT DIAMETER IN NEAREST THOUSANDTHS.