

SMALL COMPONENTS

FILL IN ALL ITEMS ASSOCIATED WITH THE APPLICATION

ENGINEERING CONTACT: _____

JOB NAME: _____

COMPANY: _____

ELEV. #: _____ H-W #: _____

EMAIL: _____

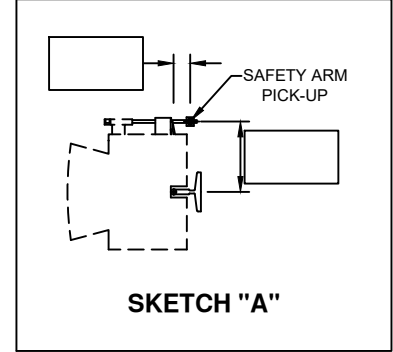
DATE: _____

GENERAL INFORMATION

- EMPTY CAR WEIGHT: _____
- CAPACITY: _____
- CAR SPEED: _____
- RAIL SIZE (IN LBS.): _____
- NEMA: _____

SAFETIES

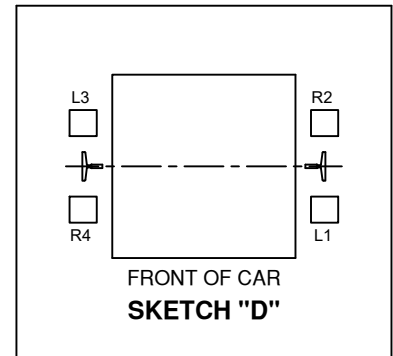
- TYPE: INSTANTANEOUS FGC
- COMPENSATION WEIGHT (IF APPLICABLE): _____
- DISTANCE BETWEEN GUIDES: (DBG) _____
- GOVERNOR LOCATION (SHOW ON SKETCH "D")
- STILE SIZE: _____
- UNDER BEAM HEIGHT: _____
- FILL OUT SHOE AND PLATES SECTION IF ADAPTOR PLATES ARE REQUIRED
- LOCATION OF SAFETY PICK-UP ARM. FILL OUT DIMENSIONS NOTED IN SKETCH "A"



SKETCH "A"

GOVERNORS

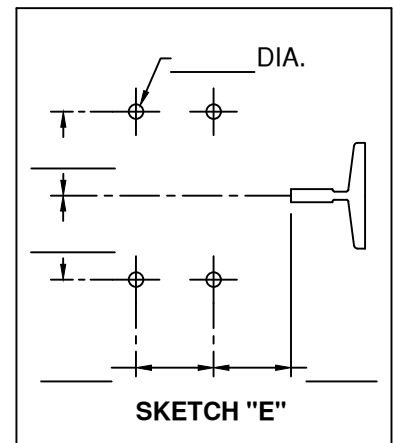
- MOUNTING LOCATION: STANDARD OVERHEAD MOUNTING PIT MOUNTED OPTION
- SHEAVE DIA (ROPE DIA): 12" (3/8") 16" (3/8") 16" (7/16") 16" (1/2")
- GOVERNOR PULL-THRU (IN LBS.): _____
- HAND OR LOCATION (SHOW ON SKETCH "D")
- LIVE SHAFT DIAMETER: N/A 12mm 0.25" 0.75" 1.00"
- ACCESSORIES: ENCLOSURE NEMA SWITCH: _____
 RESETTABLE (12" ONLY) MOUNTING PLATE



FRONT OF CAR
SKETCH "D"

TENSION WEIGHTS

- SHEAVE DIA (ROPE DIA): 12" (3/8") 16" (3/8") 16" (7/16") 16" (1/2")
- TENSION WEIGHT TYPE: FRAME SWING



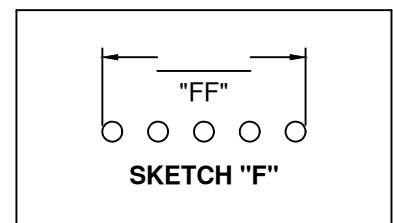
SKETCH "E"

SHOES AND PLATES

- SHOE TYPE: _____ MANUFACTURER: _____
- TEMPLATE (FILL IN ALL DIMENSIONS ON SKETCH "E")

ROPE GRIPPERS

- COMPENSATION WEIGHT (IF APPLICABLE): _____
- ROPING: 1:1 2:1
- HOIST ROPES: QUANTITY _____ SIZE _____
- OUT-TO-OUT OF HOIST ROPES (SEE SKETCH "F" - DIM. "FF"): _____
- LENGTH OF HYDRAULIC HOSE REQUIRED:
 - STANDARD (27")
 - 4'-0" 5'-0" 6'-0" 8'-0" CUSTOM (UP TO 30'-0"): _____



SKETCH "F"